

**SoSafe™**  
**Specialty Products**  
Cleaning products for all surfaces

# Product Manual

## 2026 Edition

This manual has been designed to train in the use of SoSafe™ products on various substrates. This document is considered a rolling document and will be updated from time to time. Should you have any comments or suggestions please contact SoSafe™ via [office@sosafe.au](mailto:office@sosafe.au)

# SoSafe™ Specialty Products Pty Limited

Head Office

50 Chard Rd, Brookvale NSW 2100, Australia

Australia Phone

02 9938 1800

International Phone

+61 2 9938 1800

Email

[office@sosafe.au](mailto:office@sosafe.au)

[sosafe.com.au](http://sosafe.com.au)

## Disclaimer

The content of this manual provided for information purposes only. No claim is made as to the accuracy or authenticity of the content. SoSafe Specialty Products Pty Ltd does not accept any liability to any person for the information or advice (or the use of such information or advice), which is provided in this manual or incorporated into it by reference. The information in this manual is provided on the basis that all persons accessing the site undertake responsibility for assessing the relevance and accuracy of its content.

## Copyright

No part of this manual may be reproduced or reused for any commercial purposes whatsoever without prior written consent from So-Safe Specialty Products Pty Limited.

VERSION: 2026

DATE LAST EDITED: February 2026

# Content

Disclaimer .....	2
Copyright .....	2
<b>Content .....</b>	<b>5</b>
<b>Who is SoSafe™ &amp; Bracton? .....</b>	<b>6</b>
<b>Management Team .....</b>	<b>7</b>
<b>Graffiti Removal .....</b>	<b>8</b>
Foreword .....	8
Safety Focused .....	8
Tools Required for Graffiti Removal .....	8
<b>SoSafe™ Graffiti Remover Product Characteristics .....</b>	<b>10</b>
Surface Active Technology .....	11
<b>Selecting The Right Graffiti Remover .....</b>	<b>12</b>
<b>Types of Graffiti .....</b>	<b>15</b>
Four variable factors to removing graffiti .....	16
<b>SoSafe™ Product Range - Graffiti Removal .....</b>	<b>17</b>
SoSafe™ Yellow Label – Painted Surfaces .....	18
SoSafe™ Green Label – Broad Spectrum & Gum Remover .....	20
SoSafe™ Blue Label – Concrete Surfaces (Sprayable Gel/Liquid) .....	22
SoSafe™ Black Label (Wet/Dry Surfaces) .....	24
SoSafe™ Professional – Red Label (Wet/Dry Surfaces) .....	26
Shadow Chaser .....	28
SoSafe™ Rapid Off .....	30
SoSafe™ Safety Shield .....	31
Sacrificial vs Permanent Coatings .....	31
<b>How to Remove Graffiti .....</b>	<b>33</b>
Graffiti on Sensitive Surfaces .....	34
General Removal Method – Sensitive Surfaces .....	34
Graffiti on Non-Sensitive Surfaces .....	35
Removing graffiti from Non-Sensitive Surfaces with SoSafe™ Blue label (Liquid or Sprayable Gel) or SoSafe™ Black Label .....	35
Removing graffiti from Non-Sensitive Surfaces with SoSafe™ Professional & Shadow Chaser .....	36
<b>Rational Behind Removing Graffiti .....</b>	<b>37</b>
<b>SoSafe™ Examples - Scenarios .....</b>	<b>39</b>
<b>General Surface Cleaning Guide .....</b>	<b>46</b>
SoSafe™ Cleaning Application Selection Guide .....	47
<b>Non-Hazardous Cleaning &amp; Degreasing Solutions .....</b>	<b>48</b>
<b>Spray Away - Formulation SoSafe™ Spray Away – Standard Formula .....</b>	<b>50</b>
Spray Away Standard Cleaning Examples .....	51
<b>SoSafe™ Spray Away pH Boosted .....</b>	<b>53</b>
Bulk Spray Away Installations .....	55
Spray Away pH Boosted – Mining, Bus & Rail .....	56

# Content

<b>Dilution &amp; Foaming Systems – Spray Away</b> .....	<b>57</b>
<b>SoSafe™ External Surface Revival</b> .....	<b>59</b>
External Surface Revival - Corrosion Testing .....	60
AQIS - Approval .....	63
TGA – Disinfectant Testing .....	64
External Surface Revival – Examples .....	66
SoSafe™ Vanilla Fresh – Odour Neutraliser .....	67
TGA – Commercial Grade Disinfectant Testing .....	69
SoSafe™ Stainless Steel Polish (with microbial protection) .....	71
SoSafe™ Metal Bright – Rust & Tarnish Remover .....	73
Metal Bright – Rust Removal Example .....	74
SoSafe™ Paint Saint - Paint preparation cleaning solution .....	75
<b>International Shipping Information</b> .....	<b>76</b>
Customs – Tariff Codes .....	77
Pallet Configuration .....	77
<b>Retail – Barcode System</b> .....	<b>78</b>
<b>Section 2 - Chemical Safety</b> .....	<b>80</b>
Introduction .....	81
Chemical Safety .....	81
Using Material Safety Data Sheets .....	82
Using Chemicals .....	83
Chemical Induction Questionnaire .....	84
<b>Section 3 - Understanding Cleaning</b> .....	<b>85</b>
Understanding Cleaning Questionnaire .....	87

# Who is SoSafe™ & Bracton

# Who is SoSafe™ & Bracton?

The Bracton Group is Australian owned and operated by the Hunter family, founders of the Pine 'O Clean brand, the most trusted & respected household hygiene product on Australian retail shelves.

The Bracton Group consists of three industry-leading companies: Bracton Industries, SoSafe™ Specialty Products and Dosatron Australia. Since the conception of Bracton Industries more than 40 years ago, Bracton has consistently developed new and innovative products and procedures for a variety of industries.



SoSafe™ Specialty Products Pty Limited is a wholly Australian owned company and part of the Bracton Group since 1985. SoSafe™ manufactures and distributes chemical surface cleaners for a diverse range of applications in a variety of industries in Australia, USA, Europe and Mid East.

SoSafe's core product manufactured lines include:

- Graffiti Removers
- Anti-Graffiti Coatings
- Chewing Gum Removers
- Chlorine Free Mould Removers
- Non-Corrosive Degreasers
- Bus/Train Interior & Exterior Cleaners
- Odour Neutralisers
- Stainless Steel Cleaner/Polish
- AQIS Approved Surface Sanitisers
- Rust/Tarnish Removers
- Other associated surface cleaning chemicals

SoSafe™ is in a unique position to provide specific chemical surface cleaning solutions to your business or department by liaising directly with our technical team. At SoSafe™ we strive to provide chemical solutions that perform better than the alternatives whilst being safer for both the user and the environment, this means a reduction in risk and safety phrases. SoSafe™ can also assist in production of Risk Assessment & Safe Work Method Statements (SWMS).

# Management Team

**Michael Hunter**  
Managing Director

Email [mike@bracton.com](mailto:mike@bracton.com)

**Max Moebius**  
Sales & Service

Email [office@sosafe.au](mailto:office@sosafe.au)

# Graffiti Removal

# Graffiti Removal

## Foreword

Graffiti removal is both an art and science. There is no one solution that will remove all graffiti from all surface types. This manual will guide So Safe™ users to the world of graffiti removal. This manual will cover contractor's methods and processes to remove graffiti from the most common substrates. For specific advice we recommend you contact our technical help line on +61 2 9938 1800.

## Safety Focused

The SoSafe™ range products are regarded as the safest graffiti removal system in the world for users, the environment and surfaces! However when using any chemical, we strongly recommend that you familiarise yourself with the safety precautions on the product packaging and Material Safety Data Sheet of the chemical that will be used. Remember: when using any graffiti removal product, test an inconspicuous area for adverse effects before commencing graffiti removal!

In the rear of this manual is a general training manual we recommend all users study to understand chemical usage, MSDS and the cleaning process.

When removing graffiti we recommend the following personal protective equipment be used:

- Heavy Duty Neoprene or Nitrile Gloves
- Enclosed Chemical Resistant Goggles
- Enclosed Shoes
- Full length Shirt and Pants

## Tools Required for Graffiti Removal

Depending on the substrate and the graffiti being removed, there are a variety of tools that should be used to assist in ease of graffiti removal. There are two broad categories of substrates that affect tools required to remove graffiti:

Painted surfaces, which includes (but not limited to): Traffic signs, colourbond, tiles, glass, toilet doors, powder-coated, whiteboards, vinyls, some plastics and other sensitive substrates.

Concrete surfaces, which includes (but not limited to): Concrete, bricks, blocks, sandstone, marble, pavers, pebble-crete, terracotta and other difficult porous surfaces.

The person removing graffiti must at all times wear suitable Personal Protective Equipment as outlined in the safety section.

### Sensitive Surfaces

- Soft brush
- White rags
- Bucket of water

### Non-Sensitive Surfaces and other porous surfaces

- Nylon hard bristled brush or scourer
- High Pressure water blaster (*Optional in some cases*)  
*Note: Hot high pressure water is the preferred system.*
- Bucket of water (*Optional*)
- Surface Shadows
- Paint Brush & pot
- Paint roller & tray

# SoSafe™ Graffiti Remover

## Product Characteristics

# SoSafe™ Graffiti Remover Product Characteristics

SoSafe™ products are recognised around the world as the safest graffiti removal products, with no recorded accidents in SoSafe's' twenty-five year history. Only SoSafe™ has the unique combination of the follow characteristics to protect the user and the environment.

- Non Flammable
- Non Toxic
- Non Corrosive#
- pH Neutral#
- Low Odour
- Water Neutralised\*
- Biodegradable
- No Californian Proposition 65 Chemicals (Black & Green)
- Low VOC content – to CARB standards (Black)

\* *SoSafe™ Red, Green and Black are not neutralised by water, to allow rapid applications.*

# *Shadow Chaser – for professionals is deemed a hazardous chemical and suitable for use by professionals.*



## Surface Active Technology

In 2007 SoSafe™ introduced Surface Active Technology (S.A.T.) into all SoSafe™ product lines. Surface Active Technology is a breakthrough technology formulated to remove deep stains from most substrates that have previously thought to have been permanent. Surface Active Technology can only be found in SoSafe™ cleaning chemicals and has revolutionised the cleaning industry allowing an effective, safer option in cleaning tasks.

# Selecting the Right Graffiti Remover

# Selecting the Right Graffiti Remover

SoSafe's philosophy is to use the product that will cause minimal impact to the substrate below, from time to time the product may require more time on the surface to remove the graffiti however this softer approach will minimise the risk of damaging the substrate below.

*Note: Always test on a non-critical area for adverse effects, before commencing graffiti removal.*

Graffiti - Surface Type	Yellow	Green	Blue	Black	Pro	Shadow Chaser	Rapid Off	Safety Shield	Paint Out
Acrylic Painted Surface	X	X						X	
Adhesive Removal (Porous)		X	X		X				
Adhesive Removal (Painted)	X	X							
Brick & Block (Painted)		X						X	
Brick & Block (Raw)			X	X	X	#		X	
Bus Exteriors	X	X							
Bus Interiors	X	X		!	!				
Colourbond/Powder Coated Metals	X	X							
Concrete (Painted)		X						X	X
Concrete (Raw)			X	X	X	#		X	X
Glass (Tinted/Coated)	X	X							
Glass (Untreated)		X	X		X				
Grout/Mortar		X	X	X	X	#		X	
Gum Removal (Concrete/Porous Surfaces)					X		X		
Gum Removal (Material/Painted Surfaces)							X		
Marble			X	X	X	#		X	
Other Difficult/Porous Surfaces			X	X	X	#		X	
Other Painted Surfaces	X	!							
Pavers			X	X	X	#		X	
Pebblecrete			X	X	X	#		X	
Perspex	X	X							
Plastics	X	X							
Raw Metal		X	X		X	#			
Sandstone			X	X	X	#		X	
Granite, Stone & Slate			X	X	X	#		X	
Shop Front Shutters Ⓓ Unpainted		X	X	X	X			X	
Shop Front Shutters Painted	X	X	!					X	
Tiles, Terrazzo & Terracotta			X	X	X	#		X	
Timber (Painted)	X	X	!					X	X
Timber (Unpainted)		X	X	X	X	#		X	
Traffic Signs (Reflective & Non-Reflective)	X	X						X	
Vinyl	X	X							
Whiteboard	X								

## Legend

- X** Product suitable to be used with substrate, and should be rinsed with water after desired affect is achieved.
- !** If **X** product is not strong enough, test product on an inconspicuous area.
- #** Product is highly corrosive and must only be used by a professional.
- †** On this type of substrate, continual graffiti attacks and removal will damage underlying substrate it is highly recommended the surface be protected with SoSafe™ Safety Shield alternatively the surface should be painted out.

# Selecting the Right Graffiti Remover

## Fast Selection Notes

SoSafe™ has a range of seven graffiti removers to fill different client needs around the world, most councils & professional graffiti removal contractors require only three types of graffiti removers to be able to remove graffiti from ALL SURFACE TYPES. If you are looking for a specific graffiti removal product such as LVP-VOC graffiti remover, graffiti remover with no prop65 listed chemicals, water neutralized graffiti remover or another specific graffiti remover, then contact a SoSafe™ consultant today.

When removing graffiti from painted surfaces. The quality of the underlying paint may affect the results. Low quality environmentally affected paints are more likely to be effected by graffiti removal products. Hot water will assist in shadow removal. For very difficult graffiti removal it maybe necessary to hire a professional with a high pressure hot water system to hit the surface at 70+ degrees at 2800 psi.

- 1. Removing Graffiti from Acrylic (Painted)**  
If Yellow label is not achieving desired results, apply Green label with a soft scourer for 30 sec and wipe off. Depending on the graffiti, the substrate maybe damaged and a perfect job may not be achievable without painting out.
- 2. Removing Graffiti from Brick, Block & Concrete (Raw)**  
Apply SoSafe™ Black Label wait 5 – 10 minutes then pressure clean off. Alternatively use SoSafe™ Professional, wait a couple of minutes and apply shadow chaser, wait a couple of minutes, pressure clean or rinse with bucket water.
- 3. Removing Graffiti from Brick, Block & Concrete (Painted)**  
Paint over. It is possible to use graffiti remover however the substrate may be affected adversely & takes longer.
- 4. Removing Graffiti from Glass**  
Spray on SoSafe™ Green, Red or Blue and wipe off.
- 5. Removing Graffiti from Plasglass (Transparent Acrylic)**  
Test surface for adverse affects, use either SoSafe™ Yellow or Green label & white rag. Some types graffiti ink bite into Plasglass and damage the substrate, therefore perfect job may not be possible.
- 6. Removing Graffiti from Plastic Kids Playground Equipment**  
Test surface for adverse affects, use SoSafe™ Green, Blue or Professional depending on the severity of the graffiti wipe on, wait 10 – 30 sec wipe off. Some plastics will be affected by graffiti remover. Some inks will be taken in by plastic and therefore a perfect job in some situations cannot be achieved.
- 7. Removing Graffiti from Sandstone**  
Apply SoSafe™ Black, wait 10 minutes and then pressure wash off. Alternatively use SoSafe™ Professional, wait 10 minutes and apply shadow chaser, wait a couple of minutes and then rinse (if pressure cleaning do not wash higher than 1000psi). Always attempt with lowest possible pressure. Allow extra time to compensate for reduced pressure.
- 8. Removing Graffiti from Shutters (Powder Coated)**  
Treat with SoSafe™ Green, time will affect how fast the graffiti will release from the shutters, rub lightly with soft scourer and wipe off with a white rag. Low quality powder coats may be affected by graffiti removal products over time.
- 9. Removing Graffiti from Timber (Raw)**  
Apply SoSafe™ Green, Black, Blue or Professional, wait 3 minutes. Apply pressure hose.

# Types of Graffiti

# Types of Graffiti

There are several factors that influence the right approach to removing graffiti:

What type of substrate has the graffiti been applied to?

What type of graffiti has been applied?

The previous section indicated the correct graffiti removal products to use on particular substrates. This section will cover the main types of graffiti, namely: aerosol spray paint and marker pen.

## Four Variable Factors to Removing Graffiti

There are four controllable factors that should be understood when removing graffiti.

- Time
- Temperature
- Agitation (Brush/Pressure Washing)
- Chemical

### Time

The longer the contact time the deeper the graffiti remover will penetrate. The more sensitive the surface the shorter the time the graffiti product is on the surface.

### Temperature

Warmer weather speeds up the rate in which the graffiti removal product works.

### Agitation

When graffiti removal products are applied by means of hard bristled brushes or scourers, it assists in breaking the bond between the graffiti and the surface.

*Note: be careful on sensitive surfaces, otherwise the underlying surface maybe damaged.*

### Chemical

Use the right chemical for the task at hand (review the product selection guide).

To compensate for any reduction in one of these for variables increase one of the other variables ie. Should the temperature be cold, increase the contact time between the graffiti and the graffiti remover, alternatively you could increase the temperature, by using a hot water pressure washing system.

# SoSafe™ Product Range

## Graffiti Removal

# SoSafe™ Yellow Label

## Painted Surfaces

Yellow graffiti remover for painted surfaces is the gentlest graffiti remover in the SoSafe™ range, Yellow label has been specifically designed to work slower than the other SoSafe™ Graffiti Removers. Yellow will allow the removal of graffiti from sensitive surfaces layer by layer, without damaging the surface at hand. When applying to the graffiti contact time on the surface is critical, as the longer it is left on the surface the deeper the product will penetrate. Ink/marker graffiti is generally easier to remove with a simple wipe on wipe off approach. Spray paints will require longer contact time.

In colder climates (below 15°C) SoSafe™ Yellow should be substituted with SoSafe™ Green.

SoSafe™ Yellow is one of the only graffiti products available worldwide that can remove graffiti from perspex/plasglass/acrylic panels without frosting/damaging.

SoSafe™ Yellow is approved for use on 3M reflective materials & CSR Alutri Panel systems.

*Note: New substrates appear frequently, always test substrate before commencing graffiti removal.*



## Specifications

Graffiti Type	Marker pen, paint, poster glue and crayon
Water deactivated	Yes
Form	Liquid
Operational Temperature	>15°C
Pack Sizes	12 x 750mL Trigger Pack (Retail Pack) 10 x 1Lt Carton Packed with Witches Caps 3 x 5 Lt Carton 25 Lt Drum

# SoSafe™ Yellow Label

## Product Data Sheet

### SoSafe™ Yellow Graffiti Remover For Sensitive Surfaces

Ideal to remove graffiti from: Perspex, traffic signs, sale signs, banners, acrylics, plastics, plasglass, painted surfaces, colourbond, powder coated metal, garage doors, glass, vinyl, white boards, bus interiors/exteriors, train interiors and other sensitive surfaces. Acrylic panels without frosting/damaging.

SoSafe™ Yellow is approved for use on 3M reflective materials & CSR Alutri Panel systems.

*Note: New substrates appear frequently, always test substrate before commencing graffiti removal.*

#### Characteristics

- pH Neutral
- Non-Toxic
- Non-Flammable
- Non-Corrosive
- Non-Hazardous
- Water Neutralised
- Biodegradable

#### Tools/Equipment

- Gloves
- Chemical Goggles
- Graffiti Remover
- White Rag
- Scourer/Nylon Brush
- Applicator (Sprayer/Paint Brush)
- Water Bucket/Hose

#### Safety

When using graffiti remover follow safety directions on the label, wear appropriate attire including - enclosed shoes, gloves and non-vented goggles.

#### Product Coverage

Coverage rates for graffiti removal vary significantly depending on various factors such as: age of the graffiti, type of graffiti, thickness of the graffiti, temperature, moisture, porosity, substrate and equipment used. A typical spray paint tag 30cm x 20cm on plastic will require approximately 80mL of product.



#### Application Procedure

1. Test surface for compatibility.
2. Clean & dry surface with a white rag.  
*Note: Most graffiti removal products work best on dry surfaces.*
3. Apply graffiti removing product with sprayer or paintbrush.
4. Wait 30 - 60 seconds, move the drips back on to the graffiti. Smudge the graffiti with a rag to test if the graffiti has released.  
*Note: Marker pens in many cases will release instantly.*
5. Rub surface with a white rag/light abrasive scourer  
*Note: While rubbing the graffiti remover on the graffiti it will take some time for the graffiti to react, the graffiti will seem to suddenly release. SoSafe™ Yellow graffiti remover has been specific designed to work slowly to reduce chance of incidental damage of the under lying substrate.*
6. Repeat steps 2 to 5, keep area wet with graffiti removal product, until all graffiti is removed.
7. Remove chemical with a water wet rag, hose or bucket of water, this will neutralise graffiti chemical.
8. If shadow exist, repeat process allowing more time for penetration or switch to the stronger SoSafe™ Green Graffiti Remover.  
*Hint: In some cases it is possible that the graffiti itself may have damaged the substrate. In this case while the graffiti maybe removed, scaring may be on the surface.*

# SoSafe™ Green Label

## Broad Spectrum & Gum Remover

SoSafe™ Green Graffiti Remover is one of the latest additions to the SoSafe™ range of graffiti removers. SoSafe™ Green is now our second most popular graffiti remover in USA & EU due to its' high versatility, the areas of this products application are broadening every day.

Initially developed by demand of USA bus and rail networks to solve the problem of graffiti on plastics without damaging the surface, this product's performance has shown amazing results in the removal of graffiti from: shutters, garage doors, colourbond, perspex, wood, plastic signs, playground equipment and other surfaces faster than any other product in all weather situations.

SoSafe™ Green Graffiti Remover is also the ideal choice to remove graffiti from acrylic transparent sound barriers & traffic signs. We recommend you contact a SoSafe™ specialist to get the specific application procedure for best results.

Furthermore, SoSafe™ Green Graffiti Remover has proven to be a superior billboard/poster remover; simply spray, wait 15 seconds and peel. The bond of the adhesive breaks down, allowing the stickiness and the poster to be removed effortlessly. Another feature of the Green Graffiti Remover is the removal of gum and glue easy with minimal fuss.

SoSafe™ Green is formulated to work faster than SoSafe™ Yellow, making it ideal for use in colder areas, compared to Yellow graffiti remover (typically slow) and SoSafe™ Blue (too strong for the application on hand).

SoSafe™ Green Graffiti Remover contains no chemicals listed in California's Proposition 65 List.



### Specifications

Graffiti Type	Marker pen, paint, poster glue and crayon
Water deactivated	No
Form	Liquid
Operational Temperature	>10°C
Pack Sizes	12 x 750mL Trigger Pack (Retail Pack) 3 x 5 Lt Carton 25 Lt Drum

# SoSafe™ Green Label

## Product Data Sheet

### SoSafe™ Green Graffiti Remover

Broad Spectrum Graffiti Remover and billboard poster remover

Ideal to remove graffiti, posters and gum from a broad range of surfaces including painted surfaces, plastics, bricks, powder-coated surfaces, playground equipment, shutters, bus interiors and many other surfaces.

#### Characteristics

- pH Neutral
- Non-Toxic
- Non-Flammable
- Non-Corrosive
- Non-Hazardous
- Biodegradable

#### Tools/Equipment

- Gloves
- Chemical Goggles
- Graffiti Remover
- White Rag
- Scourer/Nylon Brush
- Applicator (Sprayer/Paint Brush/Roller)
- Water Bucket/Hose

#### Safety

When using graffiti remover follow safety directions on the label, wear appropriate attire including - enclosed shoes, gloves and non-vented goggles.

#### Product Coverage

Coverage rates for graffiti removal vary significantly depending on various factors such as: age of the graffiti, type of graffiti, thickness of the graffiti, temperature, moisture, porosity, substrate and equipment used.

A typical spray paint tag 1 metre x 2 metres on a colourbond fence will require approximately 100mLs.



#### Application Procedure

1. Apply graffiti removing product by sprayer, paint brush or roller.
2. Wait a minimum of 30 second for painted surfaces.
3. Rub surface softly with a scourer or rag in a circular motion. If the graffiti moves, the bond between the graffiti and the surface is breaking, if not allow additional time. To remove, wipe the surface clean then rinse wall with water.
4. If shadow remains repeat steps 2 to 3.

# SoSafe™ Blue Label

## Concrete Surfaces (Sprayable Gel/Liquid)

SoSafe™ Blue graffiti remover for concrete surfaces is our most popular graffiti remover. SoSafe™ Blue label can be used on most varieties of porous surfaces and other difficult surfaces. Blue will continue to attack the surface as long as it has contact time, for this reason Blue is also available in sprayable gel.

Sprayable gel when applied to a vertical wall, will hold in position until the user rinses the wall, reducing the quantity of product required by up to 220% to remove graffiti as well as preventing the graffiti dye running down the walls. So Safe Blue is suitable for use on concrete, marble, blocks, stucco, stone and other porous surfaces. Will remove paint, marker pen, poster glue and crayon.

SoSafe™ Blue Liquid is popular with contractors as it is used in conjunction with Shadow Chaser to eliminate all traces of graffiti, see the Shadow Chaser instructions for further information.



### Specifications

<b>Graffiti Type</b>	Marker pen, paint, poster glue and crayon
<b>Water deactivated</b>	Yes
<b>Form</b>	Liquid or sprayable gel
<b>Operational Temperature</b>	>10°C (best results >10°C)
<b>Pack Sizes</b>	12 x 750mL Trigger Pack 10 x 1Lt Carton Packed with Witches Caps 3 x 5 Lt Carton 25Lt Drum

# SoSafe™ Blue Label

## Product Data Sheet

### SoSafe™ Blue Graffiti Remover For Non-Sensitive Surfaces

Ideal to remove graffiti from: Brick, concrete, blocks, sheet metal, train exteriors, mortar, grout, marble, granite, slate, stone, stucco, unpainted shutters, terracotta, terrazzo, pebblecrete, pavers and other difficult to remove graffiti stains.

#### Characteristics

- pH Neutral
- Non-Toxic
- Non-Flammable
- Non-Corrosive
- Non-Hazardous
- Water Neutralised
- Biodegradable

#### Tools/Equipment

To remove graffiti from difficult surfaces quickly it is recommended to have high pressure available, it is still possible to achieve great results without high pressure washing, though a little more time maybe required.

- Gloves
- Chemical Goggles
- Graffiti Remover
- White Rag
- Scourer/Nylon Brush
- Applicator (Paint Brush/Roller)
- Water Bucket/Hose/High Pressure Washer

#### Safety

When using graffiti remover follow safety directions on the label, wear appropriate attire including - enclosed shoes, gloves and non-vented goggles.

#### Product Coverage

Coverage rates for graffiti removal vary significantly depending on various factors such as: age of the graffiti, type of graffiti, thickness of the graffiti, temperature, moisture, porosity, substrate and equipment used. A typical spray paint tag 1 metre x 2 metres on a brick wall will require approximately 400 mls of product.



#### Application Procedure

1. Dry surface  
SoSafe™ Blue is designed to work on dry surfaces.  
*Note: Use SoSafe™ Professional with Shadow Chaser and high-pressure washer, if dry wall is not possible.*
2. Scrub surface with a scourer, nylon hard bristle or wire brush, to break the seal.
3. Apply graffiti removing product by paintbrush or roller.
4. Wait a minimum of 5 minutes for older paint leave for up to 30 minutes.
5. Scrub surface with a scourer, nylon hard bristle or wire brush in a circular motion. When the graffiti moves, the bond between the graffiti and the surface is breaking. To remove/neutralise product, rinse wall with water.

#### (Optional)

For best results use a high pressure water blaster.

*Note: Often the surface will not appear to be completely free of graffiti until the wall is washed.*

6. Coat surface with a semi sacrificial surface graffiti protection such as So Safe Safety Shield, to make it easier for future graffiti removal.

\*On particularly difficult surfaces SoSafe™ Professional & Shadow Chaser may be required.

# SoSafe™ Black Label

## Wet/Dry Surfaces

NEW PRODUCT AVAILABLE IN 2011

SoSafe™ Black label graffiti remover is the most advanced graffiti removal technology released by any graffiti removal chemical manufacturer, suitable for removal of paint graffiti from non-sensitive surfaces. Utilising the latest Surface Active Technology SoSafe™ Black is a real breakthrough invention delivering unparalleled performance eliminating the need for use of flammable or corrosive products for good. No more burns, No more itchy skin!

Ideal for use on most porous, non-sensitive or other difficult surfaces to remove spray paint, marker, poster glue, shoe polish and crayon.

So check the real USE BY date for your current graffiti removal technology and make the switch to SoSafe™ Black, the better choice for employees, environment and performance.

SoSafe™ Black Label has been specifically formulated for use by professionals and contractors with pressure cleaning equipment. Unlike Blue and Yellow graffiti remover, Black Label graffiti remover is not deactivated by water. The advantage of this is that it can be used immediately after pressure cleaning to give a deeper clean without the need for corrosive chemicals. SoSafe™ Black Label Graffiti Remover is suitable for use on concrete, blocks, stucco, stone and other porous surfaces.

SoSafe™ Black Graffiti Remover contains no chemicals listed in California's Proposition 65 List and meets LVP-VOC requirements set out by the Californian Air Resources Board. VOC exempt.



### Specifications

Graffiti Type	Paint, poster glue and crayon
Water deactivated	No
Form	Liquid
Operational Temperature	>10°C
Pack Sizes	12 x 750mL Trigger Pack (Retail Pack) 3 x 5 Lt Carton 25 Lt Drum

# SoSafe™ Black Label

## Product Data Sheet

### SoSafe™ Black Label Graffiti Remover For Non-Sensitive Surfaces

Ideal to remove paint graffiti from: Brick, concrete, blocks, sheet metal, mortar, grout, marble, granite, slate, stone, stucco, unpainted shutters, terracotta, terrazzo, pebblecrete, pavers and other difficult to remove graffiti stains.

#### Characteristics

- Non-Combustible (High Flash Point)
- Classified LVP-VOC Exempt to Californian Air Resources Board. (Does not evaporate quickly).
- Works in all weather conditions
- Contains Natural Ingredients
- Non-Toxic
- Non-Flammable
- Non-Corrosive
- Biodegradable
- Non US SARA reportable\* Water Soluble
- Pleasant Odour
- Cost Effective

#### Tools/Equipment

To remove graffiti from difficult surfaces quickly it is recommended to have high pressure available, it is still possible to achieve great results without high pressure washing, though a little more time maybe required.

- Gloves
- Chemical Goggles
- Graffiti Remover
- Pressure Washer (preferred) or Scourer/Nylon Brush
- Applicator (Paint Brush/Roller)
- Water Bucket/Hose (if no pressure washer)

#### Safety

When using graffiti remover follow safety directions on the label, wear appropriate attire including - enclosed shoes, gloves and non-vented goggles.



#### Product Coverage

Coverage rates for graffiti removal vary significantly depending on various factors such as: age of the graffiti, type of graffiti, thickness of the graffiti, temperature, moisture, porosity, substrate and equipment used. A typical spray paint tag 1 metre x 2 metres on a brick wall will require approximately 300mLs to 1 Litre of product.

#### Application Procedure

1. Apply SoSafe™ Black graffiti remover product with paint brush or roller.
2. Wait a minimum of 3 minutes, longer for old graffiti.
3. **High Pressure Equipment**  
High-pressure water blaster (hot water preferable), working slowly with your back facing the wind at a 45° angle, approx 20 cm away from the surface.

#### No High Pressure Equipment

Scrub surface with a scourer, nylon hard bristle or wire brush in a circular motion. When the graffiti moves, the bond between the graffiti and the surface is breaking. To remove/neutralise product, rinse wall with water.

*Note: Often the surface will not appear to be completely free of graffiti until the wall is washed.*

#### 4. (Optional)

Coat surface with a semi sacrificial surface graffiti protection such as So Safe Safety Shield, to make it easier for future graffiti removal.

# SoSafe™ Professional Red Label

## Wet/Dry Surfaces

SoSafe™ Red Professional (Red Label) has been specifically formulated for use by professionals and contractors with pressure cleaning equipment. Unlike Blue and Yellow graffiti remover, Professional graffiti remover is not deactivated by water. The advantage of this is that it can be used immediately after pressure cleaning to give a deeper clean.

For particularly difficult graffiti stains i.e. shadows, Professional should be used in conjunction with Shadow Chaser (see application section for details). This process will eliminate all stains, graffiti, shadows and/or discolouration no matter how deep the stain. It should be noted that the SoSafe™ Professional will leave the surfaces with a 'wet' appearance for up to a couple of days after treatment; this illustrates how deep the chemical is penetrating the substrate and is not permanent.

*Note: Some contractors prefer to leave Professional Edition on light shadows overnight to fade out shadows when not used in conjunction with shadow chaser.*

SoSafe™ Graffiti Remover Professional is suitable for use on concrete, blocks, stucco, stone and other porous surfaces.



## Specifications

<b>Graffiti Type</b>	Marker pen, paint, poster glue and crayon
<b>Water deactivated</b>	No
<b>Form</b>	Liquid
<b>Operational Temperature</b>	>10°C
<b>Pack Sizes</b>	12 x 750mL Trigger Pack (Retail) 10 x 1Lt Carton Packed with Witches Caps 3 x 5 Lt Carton 25 Lt Drum

# SoSafe™ Professional Red Label

## Product Data Sheet

### SoSafe™ Professional (Red) Graffiti Remover For Professionals

Ideal to remove graffiti from: Brick, concrete, blocks, sheet metal, train exteriors, mortar, grout, marble, granite, slate, stone, stucco, unpainted shutters, terracotta, terrazzo, pebblecrete, pavers and other difficult to remove graffiti stains.

#### Characteristics

- pH Neutral
- Non-toxic
- Non-Flammable
- Non-Corrosive
- Non-Hazardous
- Non-Water Neutralised
- Biodegradable

#### Tools/Equipment

To remove graffiti from difficult surfaces quickly it is recommended to have high pressure available, it is still possible to achieve great results without high pressure washing, though a little more time maybe required.

- Gloves
- High Pressure Washer
- Chemical Goggles
- Graffiti Remover
- Applicator (Sprayer/Paint Brush/Roller)

#### Safety

When using graffiti remover follow safety directions on the label, wear appropriate attire including - enclosed shoes, gloves and non-vented goggles.

#### Product Coverage

Coverage rates for graffiti removal vary significantly depending on various factors such as: age of the graffiti, type of graffiti, thickness of the graffiti, temperature, moisture, porosity, substrate and equipment used. A typical spray paint tag 1 metre x 2 metres on a brick wall will require approximately 400mLs to 1 Litre of product.



#### Application Procedure

1. Dry surface is preferable, however product will work on damp surface.
2. Apply product by sprayer, paintbrush or roller.
3. Wait a minimum of 3 minutes, longer for old graffiti.
4. Should the graffiti be difficult or not releasing, apply Shadow Chaser directly over the top of the graffiti remover with:

##### Small Areas

Use paintbrush using a small container Shadow Chaser, keep your wrist down while applying, so not to have product run down your glove, do not spray.

##### Large Areas

Use paint roller and tray, apply slowly (take care not to come into direct contact with Shadow Chaser), do not spray (follow label application and safety directions)

*Note: Apply Shadow Chaser with care, follow all safety procedures. DO NOT SPLASH.*

5. Leave Shadow Chaser for a minimum of 4 minutes.
6. Remove chemicals with a high-pressure water blaster (hot water preferable), working slowly back facing the wind at a 45° angle at 3000psi for hard surfaces or < 900 psi on erodible surfaces.

# Shadow Chaser

The removal of some graffiti types such as very old graffiti requires a special approach to removal. This approach is a combination of knowledge, skill and chemical technology. Shadow Chaser forms part of this revolutionary tool in the battle against graffiti removal, increasing the speed, performance and efficiency of graffiti removal crews. Shadow Chaser should only be used by trained professional graffiti removal technicians, SoSafe™ trained graffiti removal crews or SoSafe™ approved training centres for best results.

Shadow Chaser is only available for use by professionals. Shadow Chaser is a corrosive formulation designed to work in conjunction with SoSafe™ Professional Edition (Red Label). Shadow Chaser has been specially formulated for stubborn graffiti stains that cannot be removed by conventional means and requires a professional approach.

## How it Works

Apply Professional Red to the surface to attack the graffiti, wait 60 seconds then apply Shadow Chaser with a brush or roller (do not splash it around) over the top of the graffiti. The surface will have a small amount of white suds appear as the Shadow Chaser and Professional penetrate the surface; the shadow will disappear in front of your eyes. Shadow Chaser has been specially formulated for stubborn graffiti stains that cannot be removed by conventional means and requires a strong-arm approach.

## Notes:

- Please pay attention to all safety precautions on the packaging and MSDS. All safety equipment is mandatory.
- Shadow Chaser must not be sprayed/atomised.
- Public/People without safety equipment must not come in contact with shadow chaser.
- Aluminium is affected by Shadow Chaser do not allow contact, if contact occurs wash thoroughly with water.



## Specifications

Graffiti Type	Shadows, used with SoSafe™ Professional Edition
Water deactivated	No
Deactivation	CO <sub>2</sub> absorption/Water dilution
Form	Liquid
Operational Temperature	Greater than -5°C
Pack Sizes	3 x 5 Lt Carton 24 Lt Drum

# Shadow Chaser

## Product Data Sheet

### Shadow Chaser Ghost Remover

Ideal to remove old graffiti, graffiti shadows and ghosts from: Brick, concrete, blocks, sheet metal, train exteriors, mortar, grout, marble, granite, slate, stone, stucco, unpainted shutters, terracotta, terrazzo, pebblecrete, pavers and other difficult to remove graffiti stains.

#### Characteristics

- Non-Flammable
- CO<sub>2</sub> Neutralised
- Biodegradable
- Corrosive

*Note: Shadow Chaser absorbs CO<sub>2</sub> from the atmosphere*

#### Tools/Equipment

To remove graffiti from difficult surfaces quickly it is recommended to have high pressure available, it is still possible to achieve great results without high pressure though a little more time maybe required.

- Gloves
- High Pressure Washer
- Non-Vented Goggles
- Graffiti Remover
- Applicator (Paint Brush/Roller)

#### Safety

When using graffiti remover follow safety directions on the label, wear appropriate attire including - enclosed shoes, gloves and non-vented goggles.

#### Product Coverage

Coverage rates for graffiti removal vary significantly depending on various factors such as: age of the graffiti, type of graffiti, thickness of the graffiti, temperature, moisture, porosity, substrate and equipment used. A typical spray paint tag 1 metre x 2 metres on a brick wall will require approximately 150mLs to 500mLs of product.



#### Application Procedure

1. Dry surface is preferable, however product will work on damp surface.
2. Apply SoSafe™ Professional by sprayer, paint brush or roller and wait a minimum of 3 minutes.
3. Apply Shadow Chaser directly over the top of the graffiti remover:

##### Small Areas

Use paint brush using a small container Shadow Chaser, keep your wrist down while applying, so not to have product run down your glove, do not spray.

##### Large Areas

Use paint roller and tray, apply slowly (take care not to come into direct contact with Shadow Chaser), do not spray (follow label application and safety directions)

*Note: Apply Shadow Chaser with care, follow all safety procedures. DO NOT SPLASH.*

4. Leave Shadow Chaser for a minimum of 4 minutes.
5. Remove chemicals with a high-pressure water blaster (hot water preferable), working slowly you're your back to the wind at a 45° angle at 3000psi for hard surfaces or < 900 psi on erodible surfaces.

# SoSafe™ Rapid Off

## Product Data Sheet

### SoSafe™ Rapid Off

For removal of chewing gum, egg, wax, crayons and adhesive

Ideal to remove wax/crayon graffiti from: Brick, concrete, terrazzo, marble, granite, besser block or any other porous surface. Rapid Off will also remove egg stains and adhesive.

SoSafe™ Rapid Off is a highly effective fix for the removal of chewing gum, egg, wax and wax based graffiti tools such as crayons on the most difficult substrates. Rapid Off is of particular benefit when graffiti has been applied using surfboard wax. Surfaces that have previously been non-maintainable such as unfinished stone, worn or damaged terrazzo, dry pressed or clay bricks and pavers can now be cleaned without damaging pressure cleaning or severe chemicals. This is of particular benefit in high pedestrian traffic areas.

SoSafe™ Rapid Off works faster than the graffiti removers in the rapid removal of chewing gum!

### Characteristics

- Non-Toxic
- Highly Effective
- Non-Hazardous
- Economical

### Tools/Equipment

- Gloves
- Chemical Goggles
- Applicator (Sprayer/Paint Brush)
- Water Bucket/Hose

### Safety

When using SoSafe™ Rapid Off follow safety directions on the label, wear appropriate attire including - enclosed shoes, gloves and non-vented goggles.

### Product Coverage

Coverage rates for graffiti removal vary significantly depending on various factors such as: age of the graffiti, type of graffiti, thickness of the graffiti, temperature, moisture, porosity, substrate and equipment used. A typical tag 30cm x 20cm will require approximately 40mL of product.



### Application Procedure

1. Test surface for compatibility.
2. Apply Rapid Off liberally with a brush or roller.
3. Wait 1 – 3 minutes
4. Brush surface and rinse or pressure clean off.
5. After desired result achieved, rinse wall with water.

### Specifications

Pack Sizes	3 x 5 Lt Carton 24 Lt Drum
------------	-------------------------------

# SoSafe™ Safety Shield

SoSafe™ Safety Shield is a semi sacrificial surface graffiti protection, making it easy to remove graffiti and suitable for all surface types (excluding glass). Safety Shield protects a surface against graffiti, mould and is reduces environmental effects on the substrate. Furthermore, Safety Shield is UV resistant i.e. it will not breakdown from exposure to the sun and requires no mixing. SoSafe™ Safety Shield will not leave a glossy finish and allows the surface to breathe.

So Safe Safety Shield can be painted over with no detrimental effects (i.e. the paint will not peel).

## How it Works

Safety Shield works by blocking the pores of the surface, the pores of a graffiti surface is what causes the 'shadow' effect. This protection allows the graffiti to be removed with no harm to the protected substrate below. The vast majority of porous substrates should be treated with two coats of Safety Shield, some substrates may absorb more product and therefore require a third coat such as sand stone. Safety Shield can be applied by brush or sprayer.

## Protection Level

Semi-Sacrificial (protects surface against graffiti remover for several attacks).

## Sacrificial vs Permanent Coatings

SoSafe™ is often asked about the advantages and disadvantages of permanent coatings vs SoSafe™ Safety Shield (semi sacrificial anti graffiti coating). While a permanent coating does sound like a good idea on porous surfaces, they are generally not regarded as a long term solutions. After several years permanent coatings tend to degrade due to several causes:

- UV degradation
- Rising damp
- Incorrect application/preparation

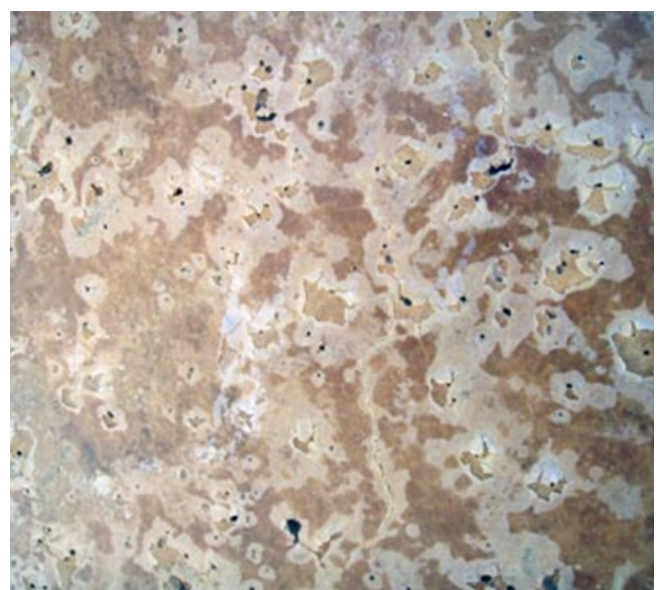
The combination of these elemental effects leaves the wall looking tired, often yellowish and frequently the bonding breaks between substrate and the permanent coating.

SoSafe™ Safety Shield is a semi-sacrificial coating that penetrates the pores, limiting the absorption of any graffiti attacks for many years. SoSafe™ Safety Shield is unnoticeable on the vast majority of surfaces, simple to apply and economical (up to 16m of coverage per litre) using a pressure pack.



## Specifications

Coverage	8 – 14 Metres per litre (2 coats)* *Surfaces such as sandstone will absorb more Safety Shield and require a 3rd coat.
Life Span	5 Years +
Form	Liquid
Pack Sizes	12 x 750mL Trigger Pack (Retail) 3 x 5 Lt Carton 24 Lt Drum



Here is recent image of a permanent coating in Malaga, Spain that failed after 4 years.

# SoSafe™ Safety Shield

## Product Data Sheet

### SoSafe™ Safety Shield Anti Graffiti Coating

Ideal to protect surfaces against permanent graffiti stains and to increase the ease of graffiti removal from difficult or sensitive surfaces such as: Sandstone, murals, war memorials, signs, painted surfaces and more.

#### Protection Level

Semi-Sacrificial - protects surface against graffiti remover for several attacks.

#### Characteristics

- pH Neutral
- Non-Toxic
- Non-Flammable
- Non-Corrosive
- Non-Hazardous
- Non-Water Neutralised
- Biodegradable

#### Tools/Equipment

- Gloves
- Chemical Goggles
- Applicator (Sprayer/Paint Brush/Roller)

#### Safety

When using Safety Shield follow safety directions on the label, wear appropriate attire including - enclosed shoes, gloves and goggles.

#### Product Coverage

8 – 14 Metres per litre (2 coats) and provides approximately 5 – 7 years anti graffiti protection depending on environmental factors.



#### Application Procedure

1. Moisten surface with water.
2. Shake Safety Shield vigorously.
3. Apply two coats to surface with brush, roller or sprayer (one hour between coats)
4. *(Optional)*  
Rinse wall two days later.  
*Note: Safety Shield will release Surface Active Agents used to penetrate surface protecting the wall for years to come.*

# How to Remove Graffiti

# How to Remove Graffiti

Since the use of SoSafe™ products are beyond the control of either seller or manufacturer, their only obligation shall be to replace any quantity of product, which is proven defective. They cannot assume any risk or liability in excess of the purchase price of the product itself, which does not include labour or any consequential damages from the use of this product. Determining the suitability of this product for any intended use shall be solely the responsibility of the user.

## ALWAYS TEST PRODUCT FIRST

### Graffiti on Sensitive Surfaces

On painted and plastic surfaces, particular care must be taken to reduce the risk of damaging the substrate below the graffiti. Always test the substrate in a non-critical area.

Marker pen is generally simple to remove with a wipe on wipe off approach, using SoSafe™ Yellow or Green Label. Should the marker graffiti be stubborn, leave graffiti remover on for a longer period of time.

Spray paint on sensitive areas can be slightly more difficult to remove. It is best to clean and then brush the surface with a nylon brush before applying SoSafe™ Green to the surface. Once the chemical has been applied, use a white rag to rub the surface, apply more graffiti remover if required, the more contact time allowed the softer the spray paint will become.

TIP: Clean from the outside edge of graffiti to the middle, to contain staining of the surface.

Some paints may require more strength to remove graffiti from sensitive areas; in these cases it is possible to use either SoSafe™ Green, Blue or Red with caution. Always test the product on a non-critical area first for adverse affects. SoSafe™ Blue will break graffiti down faster than Green & Yellow, therefore should only be used in a wipe on, wipe off approach.

*Note: Never use SoSafe™ Blue on decals.*

### General Removal Method Sensitive Surfaces

1. Test surface for compatibility.
2. Dry surface (most graffiti removal products work best on dry surfaces)
3. Clean surface with a white rag.
4. Apply SoSafe™ Yellow or Green Graffiti Removal product with sprayer.
5. Wait 30 - 60 seconds, move the drips back on to the graffiti.
6. Rub surface with rag/light abrasive scourer  
*Note: While rubbing the graffiti remover on the graffiti it will take some time for the graffiti to react, the graffiti will seem to suddenly release.*  
So Safe Yellow graffiti remover has been specific designed to work slowly to reduce chance of incidental damage of the under lying substrate.
7. Repeat steps 2 to 5, keep area wet with graffiti removal product, until all graffiti is removed.
8. Remove chemical with a water wet rag, hose or bucket of water, this will neutralise graffiti chemical.
9. If shadow exist, repeat process.

*Hint: It is possible that chemicals in the graffiti itself may have damaged the substrate. In this case while the graffiti maybe removed, scarring may be on the surface.*

# How to Remove Graffiti

## Graffiti on Non-Sensitive Surfaces

Marker pen and spray paint can be treated by the same method on non-sensitive areas such as raw brick, block and similar surfaces. Factors that affect the removal of graffiti on these types of surface depend on several factors.

### Age of the graffiti

The longer graffiti is left on a surface, the more difficult it is to remove.

*Note: The use of high pressure water & hot water is preferable (3000 psi for hard surfaces, < 900 psi on surfaces such as sand stone) contact technical hotline for specifics.*

### Temperature

Heat speeds up the reaction, allowing for easier graffiti removal.

### Moisture

SoSafe™ Yellow and Blue graffiti removal chemicals are water neutralised and therefore require a dry surface to work. SoSafe™ Green, Black and Professional with Shadow Chaser works in both wet and dry environments, however it is recommended to work on dry surfaces where possible as the water can reduce the cleaners solvent ability.

### Paint/Ink Type

Different paints and inks have different base chemicals, resulting in various reactions to graffiti removal products. E.g. Some white and yellow paints contain a base metal that forms a tighter bond to surfaces than other paints making them more difficult to remove. Choosing the right chemical and the right technique will make perfect results easier to achieve.

## Removing graffiti from Non-Sensitive Surfaces with SoSafe™ Blue label (Liquid or Sprayable Gel) or SoSafe™ Black Label

1. Dry surface (SoSafe™ Blue graffiti removal products work only on dry surfaces).  
*Note: SoSafe™ Black Label can be used on wet or dry surfaces.*
2. If not using a pressure washer, scrub surface with a scourer, nylon hard bristle or wire brush, to break the seal.
3. Apply graffiti removing product by sprayer, paint brush.
4. Wait a minimum of 3 minutes, allow at least 5 – 10 minutes in colder regions.
5. Scrub surface again with a scourer, nylon hard bristle or wire brush in a circular motion. When the graffiti moves, the bond between the graffiti and the surface is breaking.  
*Note: Often the surface will not appear to be completely free of graffiti until the wall is washed.*
6. Repeat steps 2 to 5, keep area wet with graffiti removal product, until all graffiti is loose.
7. Remove/Neutralise chemicals with a bucket of water, hose or high-pressure water blaster (hot water preferable), working slowly back facing the wind at a 45° angle, approx 20 cm away from the surface.
8. If shadow exist – repeat process.\*
9. Coat surface with a semi sacrificial surface graffiti protection such as SoSafe™ Safety Shield, to make future graffiti removal easier.

\*On particularly difficult surfaces Shadow Chaser may be required.

# How to Remove Graffiti

## Removing graffiti from Non-Sensitive Surfaces with SoSafe™ Professional & Shadow Chaser

1. Dry surface is preferable, however product will work on damp surface (most graffiti removal products work best on dry surfaces).
2. Scrub surface with scourer, nylon hard bristle or wire brush, to break the seal.
3. Apply graffiti removing product by sprayer, paintbrush or roller.
4. Wait a minimum of 5 minutes, longer in cold regions.
5. Should the graffiti be difficult or not releasing, apply Shadow Chaser directly over the top of the graffiti remover with:

### Small Areas

Use paint brush using a small container Shadow Chaser, keep your wrist down while applying, so not to have product run down your glove, do not spray (follow label application and safety directions).\*

### Large Areas

Use paint roller and tray, apply slowly (take care not to come into direct contact with Shadow Chaser), do not spray (follow label application and safety directions).\*

6. Repeat steps 3 to 6, keep area wet with graffiti removal product, until all graffiti is loose.
7. Remove chemicals with a high pressure water blaster (hot water preferable), working slowly back facing the wind at a 45° angle, approx 20 cm away from the surface at 3000psi for hard surfaces or < 900 psi on erodible surfaces .
8. Coat surface with a semi-sacrificial surface graffiti protection such as SoSafe™ Safety Shield, to make future graffiti removal easier.

\*Apply Shadow Chaser with care, follow all safety procedures. DO NOT SPLASH.

# Rational Behind Removing Graffiti

# Rational Behind Removing Graffiti

Article by: [graffitihurts.org](http://graffitihurts.org)

Graffiti vandals believe their actions harm no one. The reality is graffiti hurts everyone: homeowners, communities, businesses, schools, and you. And, those who practice it risk personal injury, violence, and arrest.

Transportation, property, and retail sales - "Graffiti contributes to lost revenue associated with reduced ridership on transit systems, reduced retail sales and declines in property value. In addition, graffiti generates the perception of blight and heightens fear of gang activity" reports the U.S. Department of Justice.<sup>1</sup> The appearance of graffiti is often perceived by residents and passers-by as a sign that a downward spiral has begun, even though this may not be true.

Safety - Patrons of buildings, parks, or public facilities where graffiti vandalism has occurred may feel that if graffiti is tolerated, then other more serious crimes, such as theft and assault, may also go unchallenged.<sup>2</sup>

Schools and youth - In schools, 52% of public high schools and 47% of middle schools reported incidents of vandalism during the 1996-1997 school years. Data shows little difference between cities, towns, and rural areas.<sup>3</sup> Additionally, about 36% of students saw hate-related graffiti at school.<sup>4</sup>

Clean up costs - Although the cost of graffiti vandalism in the U.S. has yet to be definitively documented, for many communities, private property owners, and public agencies the cost is rising each year.

Figures from a variety of cities across the U.S. suggest that graffiti cleanup alone costs taxpayers about \$1-3 per person each year. For smaller communities the amount dedicated to graffiti cleanup annually may be less than \$1 per person.

A 2006 survey of the 88 cities, Caltrans and Metro in Los Angeles County on graffiti removal found the cost was about \$28 million. With a population of close to 10 million, the per capita cost is about \$2.80.<sup>5</sup> With a population of just under one million, the City of San Jose, CA spent approximately \$2 million in 2006 fighting graffiti.<sup>6</sup>

For communities with smaller populations, per capita costs are typically under \$1.00. Pittsburgh, PA (population just over 300,000) spends around \$350,000 annually for graffiti clean up.<sup>7</sup> Omaha, NE spends about \$100,000 a year on graffiti removal (population just over 400,000).<sup>8</sup> In 2006, the Tennessee Department of Transportation spent more than \$240,000 on removing graffiti along its roads and bridges.<sup>9</sup>

Denver, CO and Milwaukee, WI, with similar populations- just over 550,000-each spend about \$1 million annually.<sup>10</sup> This is a per capita cost of about \$1.80. In Houston, TX (population just over 2 million), the city earmarked \$2.2 million for cleanup of existing graffiti in 2006.<sup>11</sup> Chicago, IL budgeted \$6.5 million in 2006 for graffiti removal and Graffiti Blasters, the city's removal program (population a little over 2.8 million).<sup>12</sup> This is a per capita cost of around \$2.30. Las Vegas, NV with a population of about 1.7 million spends more than \$3 million each year cleaning up graffiti.<sup>13</sup>

## Article Footnotes

1. Deborah Lamm Weisel, "Graffiti," U.S. Dept of Justice Problem-Oriented Guides for Police Series No. 9, (2002).
2. Deborah Lamm Weisel, "Graffiti," U.S. Dept of Justice Problem-Oriented Guides for Police Series No. 9, (2002).
3. U.S. Department of Education, "Indicators of School Crime and Safety: 2001", October 2001, p. 18-19.
4. Deborah Lamm Weisel, "Graffiti," U.S. Dept of Justice Problem-Oriented Guides for Police Series No. 9, (2002).
5. Ari Telias, Graffiti Abatement Program Manager, LA County Dept. of Public Works.
6. Telephone conversation with Rick Stanton, City of San Jose, March 2007.
7. "City officials say they are making headway against graffiti." [Centredaily.com](http://Centredaily.com), November 27, 2006.
8. "Omaha plans to track graffiti with the help of satellites." [KETV.com](http://KETV.com), October 19, 2006.
9. "Graffiti grows as costly nuisance for Nashville," [The Tennessean](http://TheTennessean.com), January 14, 2007.
10. "Denver to tackle graffiti 'epidemic'." [Rocky Mountain News](http://Rocky Mountain News), October 17, 2006. "City shunning Coke's graffiti art contest." [Milwaukee Journal Sentinel](http://Milwaukee Journal Sentinel), September 29, 2006.
11. "New weapons in graffiti fight: rewards, 'paint bank'." [Houstonist](http://Houstonist.com), June 23, 2006.
12. "Night-vision cameras aim to stop graffiti." [Chicago Sun-Times](http://Chicago Sun-Times), April 6, 2006.
13. "Graffiti vs. art update." [KVBC/DT Las Vegas](http://KVBC/DT Las Vegas), April 10, 2006.

# SoSafe™ Examples Scenarios

# SoSafe™ Examples

Video demonstration available at:  
[cleancityinnovations.com/graffiti-removal-videos.html](http://cleancityinnovations.com/graffiti-removal-videos.html)

*Note: There are in infinite number of substrates and graffiti utensils. This is a guide. Always test graffiti remover in a non-critical area prior to use!*

## Scenario

Spray paint on truck exterior.

## Product

SoSafe™ Yellow  
Graffiti Remover



## Scenario

Graffiti on bus/train seat.

## Product

SoSafe™ Green  
Graffiti Remover



## Scenario

Graffiti on bus/train overhead panel.

## Product

SoSafe™ Green  
Graffiti Remover



# SoSafe™ Examples

## Scenario

Spray paint on transparent sound barrier.

## Product

SoSafe™ Green  
Graffiti Remover



## Scenario

Graffiti on railway reflective signage.

## Product

SoSafe™ Green  
Graffiti Remover



## Scenario

Graffiti on reflective traffic signage.

## Product

Use SoSafe™ Yellow  
(hot weather) or Green  
(cold - mild weather)



# SoSafe™ Examples

## Scenario

Train door cleaned with incorrect product.

## Product

Unknown solvent



## Scenario

Permanent marker and “unremovable graffiti ghosting” on train door interior.

## Product

Cleaned with SoSafe™ Blue Graffiti Remover.

*Note: This surface has been tested for compatibility with SoSafe™ Blue and a specific method statement. SoSafe™ Blue is normally too strong for use on coated/painted surfaces. Please consult your SoSafe™ representative for more information.*



# SoSafe™ Examples

## Scenario

Permanent marker on rubber floor.

## Product

Cleaned with SoSafe™ Professional Graffiti Remover.

*Note: This surface has been tested for compatibility with SoSafe™ Professional and a specific method statement. SoSafe™ Professional is normally too strong for use on coated/painted surfaces. Please consult your SoSafe™ representative for more information.*



## Scenario

Spray paint on train exterior.

## Product

SoSafe™ Blue Graffiti Remover



## Scenario

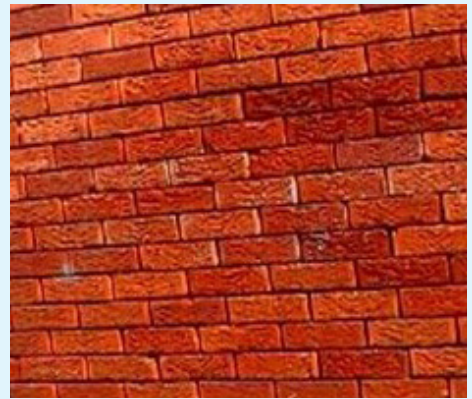
Spray paint on Colourbond/Powder-coated surface.

## Product

SoSafe™ Green Graffiti Remover



# SoSafe™ Examples



## Scenario

Various brick surfaces.

## Product

Can be cleaned with SoSafe™ Blue (if graffiti is relatively fresh and > 10oC), alternatively use SoSafe™ Black Label or SoSafe™ Professional, Shadow Chaser and domestic quality gurney (high pressure).

*Note: Hot high-pressure water is preferential in this situation if the graffiti is old and particularly stubborn.*



# SoSafe™ Examples



## Scenario

Various hard surfaces.

## Product

Can be cleaned with SoSafe™ Blue (if graffiti is relatively fresh and > 10oC), alternatively use SoSafe™ Black Label or SoSafe™ Professional, Shadow Chaser and domestic quality gurney (high pressure).

*Note: Hot high-pressure water is preferential in this situation if the graffiti is old and particularly stubborn.*



# General Surface Cleaning Guide

# General Surface Cleaning Guide

SoSafe™ manufactures a range of surface cleaning products, often these products have a variety of applications in a broad range of industries. If you are not sure which product is suitable for your cleaning, degreasing or other application, please do not hesitate to contact your local distributor for more information.

*Note: Always test on a non-critical area for adverse effects, before commencing cleaning of surfaces. Contact the SoSafe™ helpline if unsure or specific advice is required.*

## SoSafe™ Cleaning Application Selection Guide

Surface to be cleaned	Spray Away	Spray Away pH Boosted	ESR	ESR pH Boosted	Metal Bright	Stainless Polish	Paint Saint	Vanilla Fresh
Rust, tea leaf stain and corrosion removal.					<b>X</b>			
Polishing stainless steel.						<b>X</b>		
Window and glass cleaning.	<b>X</b>							
General cleaning (hospitality).	<b>X</b>							
Shoe scuff removal from doors, walls and other interior surfaces.	<b>X</b>							
Quick break degreasing and cleaning of heavy machinery.		<b>X</b>		<b>X</b>				
Coal decaking from lorries.		<b>X</b>		<b>X</b>				
Train/Bus interior cleaning.	<b>X</b>							
Train exterior cleaning.	<b>X</b>	<b>X</b>						
Train & Bus Mechanical Parts		<b>X</b>						
Carpet spot cleaning to remove blood, grass, ink, red wine and other difficult stains.	<b>X</b>							
Tile cleaning in heavy traffic areas in-door/outdoor.	<b>X</b>	<b>X</b>	<b>X</b>	<b>X</b>				
Mold and mildew removal indoors.	<b>X</b>							
Mold and mildew removal from canvas, tents, caravan awnings, glass/plastic houses, fiberglass boats, yacht sails, inflatable dinghies and plastic houses.			<b>X</b>					
Mold and mildew removal from building exteriors, driveways, asphalt, astroturf, bowling greens, bricks, concrete, cladding, grouting, limestone, marble, outdoor furniture, pots, paintwork, paths, patios, pool surrounds, sand-stone, shade sails, teak decks, tiles, timber decks, tombstones, umbrellas (outdoor), vinyl cladding, weatherboards and more.			<b>X</b>	<b>X</b>				
Grease & oil removal from driveways.				<b>X</b>				
Factory floor wash downs.		<b>X</b>		<b>X</b>				
Gasoline station wash downs.		<b>X</b>		<b>X</b>				
Food cool room mold removal.	<b>X</b>	<b>X</b>						
Odor removal including vomit, tobacco, urine, garbage and other offensive odors.								<b>X</b>
Painting preparation washing (sugar soap re-placement).							<b>X</b>	

# Non-Hazardous Cleaning & Degreasing Solutions

# Non-Hazardous Cleaning & Degreasing Solutions

In 2009 SoSafe™ developed a non-hazardous cleaning and degreasing concentrate formulation known as SoSafe™ Spray Away. The Spray Away formulation is a unique product that replaces many hazardous chemicals with applications in almost all workplaces. The unique ability of Spray Away to cut through the heaviest grease, oil and dirt whilst disinfecting a surface to hospital standards is unmatched. Spray Away surpasses requirements for AQIS and TGA Disinfectant benchmarks.

Where products usually require high pH levels (alkaline detergents) to emulsify oil and grease, Spray Away will do the job in a shorter time with less effort. This ability to remove dirt, greases and oil with out a high pH level is not only safe for the user but also less damaging on assets and equipment.

Currently SoSafe™ Spray Away formulations are in use in the following industries throughout Australia, Europe and USA:

Industry	Application
Mass Transport	Cleaning bus & train interiors, exteriors and workshops (pH Boosted formulation).
Roads Infrastructure	Cleaning traffic tunnels of pollution.
Airports & Factories	Used in floor scrubbing systems.
Hospitality	General cleaning of accommodation (ie. As a food safe surface cleaner, bathroom cleaner, disinfectant, scuff remover, carpet spotter, floor cleaner, window cleaner, mould remover, bleach replacement, spray and wipe replacement, canvas cleaner and more.
Hotels	Cellar & bar cleaning.
Retail	General cleaner for grocery stores.
Aged Care & Schools	As per hospitality use.
Mining	Workshop, plant and truck washing (pH Boosted formulation)
Contract Cleaning	As per hospitality use and building exterior cleaning

# SoSafe™ Spray Away Formulation

# SoSafe™ Spray Away Formulation

Suitable for everyday general cleaning use, available in concentrate or ready to use (pre-diluted) bottles.

- Economical! - Concentrate dilutable refills available
- Removes mould & mould spores
- Low Odour – Light pleasant perfume
- Non Hazardous & Non Toxic – Safe for you!
- Biodegradable – Safe for the environment

## Specifications

<b>Pack Sizes</b>	3 x 5 Lt Carton
	25Lt Drum
	200Lt Drum
	1000Lt IBC

*Note: Dilution and dispensing systems are available for bulk consumers. In the hospitality industry, bus and train industry SoSafe™ can supply 25Lt, 200Lt or 1000Lt bulk containers of the Spray Away Heavy Duty with a dispensing system, which automatically dilutes the product into refillable bottles. The benefit to this type of client is that they have lower stock holdings (1 product replaces over 10 different products).*



## Pre-Diluted/Ready to Use Packs

12 x 750 mL Heavy Duty  
For the toughest of stains  
Premixed 1 concentrate : 0 water

12 x 750 mL General Purpose  
Fast acting Spray & Wipe replacement.  
Premixed 1 concentrate : 4 water

12 x 750 mL Windows & Glass  
Premixed 1 concentrate : 10 water

# Spray Away Standard Cleaning Examples

## Scenario

Dirt and grime on bus/  
train entry.

## Product

SoSafe™ Spray  
Away Standard



## Scenario

General Housekeeping –  
hotels/apartments. Sinks,  
bathrooms & toilets.  
Removes scuff marks,  
blood stains, mould,  
bathroom scum etc.

## Product

SoSafe™ Spray  
Away Standard



# SoSafe™ Spray Away pH Boosted

# SoSafe™ Spray Away pH Boosted

Cleans first time, every time. No need to wash twice! SoSafe™ Spray Away pH Boosted is an AQIS approved non-hazardous degreaser cleaner, useful in a broad range of industrial cleaning applications. Works fast to remove oil, grease, coal, mud and mould, degreasing and decarbonizing. Spray Away pH Boosted incorporates quick-break capabilities to simplify industrial facility waste water management.

Since the introduction of this product, we have never received so much positive feedback, in terms of time saved and how clean buses, trains, engineering parts have become! While there are thousands of degreasers in the market, the response has been overwhelming. Contact SoSafe™ today to find out more.

Spray Away pH Boosted is used for high performance engine degreasing in the following industries; heavy or light vehicles and equipment, machinery, buses, light rail, heavy rail, trams, lorries, DMU, EMU, diesel locomotives, workshop floors, earthmoving equipment, decoking of coal, hard surface cleaning, driveway cleaning, factory cleaning, boat cleaning, cool room cleaning, de-greening rooms and more.

## Characteristics

Quick Break Formulation, Works on hot surfaces (no fuming), dilutable, free rinsing (no streaking), will not dull paint, non-corrosive and biodegradable.

*Note: Dilution and dispensing systems are available for bulk consumers. In the hospitality industry, bus & train industry SoSafe™ can supply 25Lt, 200Lt or 1000Lt bulk containers of the Spray Away Heavy Duty with a dispensing system, which automatically dilutes the product into refillable bottles. The benefit to this type of client is that they have lower stock holdings (1 product replaces about 10 different products).*

## Quick Break Facts!

The cost of waste water management for all industrial industries cannot be understated! SoSafe™ delivers proved benefits with quick break technologies. How it works – Spray Away pH Boosted emulsifies greases & oils from equipment, vehicles, etc.. during the cleaning phase. When the waste enters the separator/pit, Spray Away releases the oils and greases, reducing the load on the waste system. The result is a higher quality trade waste water.

Better for the environment! Lower cost of operations, as the facility pays less for waste water removal. We have delivered savings of over \$4000 per week to some facilities.



## Specifications

<b>Pack Sizes</b>	3 x 5 Lt Carton 25Lt Drum 200Lt Drum 1000Lt IBC
-------------------	----------------------------------------------------------

# SoSafe™ Spray Away pH Boosted

## Bulk Spray Away Installations



# SoSafe™ Spray Away pH Boosted

## Scenario

Bus engine in need of degreasing.

## Product

SoSafe™ Spray Away pH Boosted



## Scenario

Engineering parts with caked on dust.

## Product

SoSafe™ Spray Away Standard



## Scenario

Train cleaning

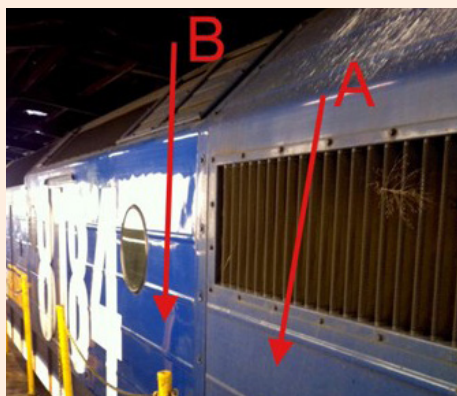
A: Cleaning required

B: Cleaned with pH Boosted, see the shine?

C: Surface cleaned with a competitors product, see the streak marks left after cleaning?

## Product

SoSafe™ Spray Away pH Boosted



# Dilution & Foaming Systems Spray Away

# Dilution & Foaming Systems

SoSafe™ recommends high volume consumers consider installing wet foam applicators to maximize chemical efficiency and results. Chemical application to engineering parts, equipment, locomotives is reduced to seconds, ensuring reduce labour intensity and chemical consumption, whilst delivering better results.

## Why Foam?

SoSafe™ recommends a number of foaming systems. SoSafe™ offers airless or air-driven foaming systems to aid in the application of Spray Away cleaner. Ideal for most environments, SoSafe™ foaming stations are easy to use and designed to withstand the toughest of environments.

Contact a SoSafe™ specialist for more information.



# SoSafe™ External Surface Revival

# SoSafe™ External Surface Revival

SoSafe™ External Surface Revival (ESR) cleans external surfaces affected by weather deterioration such as water, mould, fungus, moss and discolouration, returning the surface to its' original condition. SoSafe™ ESR's residual effect continues to protect the surface for up to 12 months after one application from mould spore and fungus.

SoSafe™ External Surface Revival is chlorine free, single part chemical with disinfecting characteristics. Ensuring ESR is safe for use on almost any surface and is made from environmentally friendly, biodegradable and naturally occurring ingredients. See the corrosion test report overleaf, illustrating the harm chlorine/bleach based chemicals have on metal parts.

Ideal for cleaning and inhibiting mould/moss from driveways, building exteriors, pathways, outdoor furniture, weathered signs, public toilet areas, around pools and car wash units.

- Biodegradable
- No Bleach or Chlorine
- No Phosphates
- Non Toxic
- Non Polluting
- Australian Quarantine and Inspection Service Approved (AQIS)
- Meets TGA's requirements for Therapeutic Goods Order No. 54 Standard for disinfectants and sterilants
- Low water consumption (spray and wipe approach in most cases)
- Meets U.S. EPA Standards
- No Bleach
- Non Flammable
- Non Corrosive
- Non Hazardous under EC regulations
- Non aerosol



## How to Use

### Method

Mix 1 litre of External Surface Revival to 5 Litres of water (warm/hot water is desirable). Apply to surface with brush or broom and leave for five - ten minutes. Scrub or high-pressure clean the surface and the mould/stains will become loose. Rinse surface with water.

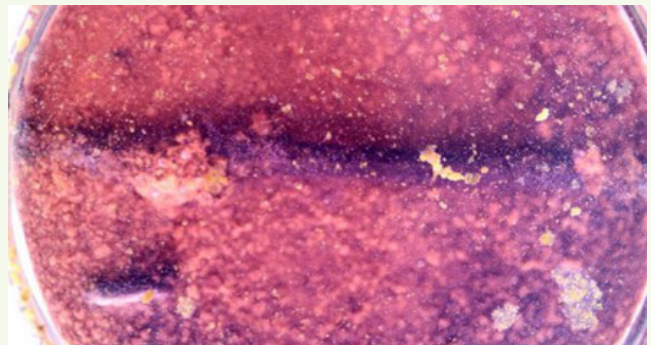
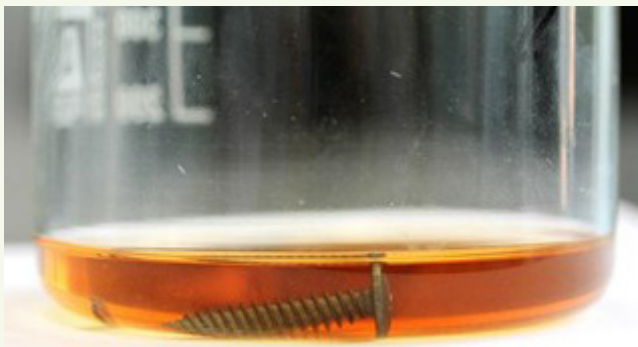
## Specifications

Protection Level	Up to 12 months from mould
Biodegradable	Yes
Form	Liquid
Pack Sizes	3 x 5Lt Carton 25 Lt Drum 200 Lt 1000Lt IBC

# SoSafe™ External Surface Revival

## Corrosion Testing

The majority of surface cleaners and mould removers on the market are typically chlorine or bleach based. Cleaners with this chemical base shorten the life of the surface fixtures. Below are a series of images illustrating the damage a typical cleaner causes to nails & screws in 72 hours in comparison to the SoSafe™ cleaning variant. Furthermore the SoSafe™ cleaner also provides up to a years protection against future mould growth.



**Product**  
SoSafe™ External Surface Revival

**Product**  
Bleach  
Chlorine Cleaner  
Typical Surface Cleaner

# SoSafe™ External Surface Revival

## Corrosion Testing

The degradation on the nail and screw treated with a typical bleach based cleaner is severe, illustrating the damage caused by using the wrong product in application. In contrast the SoSafe™ treated nail & screw appear cleaner with no visual degradation. The close up illustrates the damage caused by a typical surface cleaner in 72 hours through oxidation.



# SoSafe™ External Surface Revival

## AQIS Approval

**IOA No 12176**

**AQIS APPROVAL OF CHEMICAL COMPOUND FOR USE IN EXPORT REGISTERED MEAT ESTABLISHMENTS**

COMMONWEALTH OF AUSTRALIA  
EXPORT CONTROL ACT 1982  
EXPORT MEAT ORDERS

**INSTRUMENT OF APPROVAL FOR CHEMICAL COMPOUND**

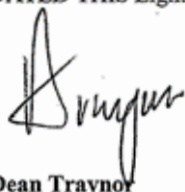
I, Dean Traynor, delegate of the Secretary, pursuant to order 128 of the Prescribed Goods (General) Orders hereby approve for use in export registered meat establishments the chemical compound known as **SoSafe External Surface Revival** which is supplied by **SoSafe Specialty Products Pty Ltd**. Subject to the conditions specified in the following Schedule. Please note this IOA is only valid at export registered meat establishments. When using the above product all manufacturer's recommendations must be observed.

**SCHEDULE**

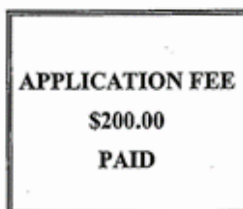
The chemical compound is approved under **Category 1 General Cleaner Type A**. This compound must not be used for any other purpose within an export registered meat establishment.

- The chemical compound shall be manufactured, labelled and contain directions for use in accordance with the details supplied by the applicant in the application for approval dated 12<sup>th</sup> May 2009.
- The person to whom this approval is granted shall notify the Secretary of any proposed alteration of formulation, labelling or directions for use of the chemical compound, and shall not effect any such alterations without receiving notification of approval from the Secretary.
- This approval is not to be construed as an indication that the Secretary has tested the efficacy of the chemical compound nor as an endorsement of the chemical compound.
- The person to whom this approval is granted shall not use the approval in any form of advertising or on any label unless the wording or display has been approved, in writing, by the Secretary.
- This approval may be revoked at any time
  - (a) if any of the conditions made by this approval are not complied with; or
  - (b) if the circumstances in which this approval was made change.
- Unless revoked, this approval will expire automatically on the 08<sup>th</sup> July 2014.

DATED THIS Eighth day of July 2009




Dean Traynor



# SoSafe™ External Surface Revival

## TGA Disinfectant Testing

<b>ALS Laboratory Group</b> ANALYTICAL CHEMISTRY & TESTING SERVICES				
Food/Pharmaceutical Division		Reference: FM0902639A-2 26 <sup>th</sup> June, 2009 Page 1 of 2		
So Safe Specialty Product Pty Ltd PO Box 386 Brookvale, NSW 2100				
Attention: Russell James				
<b>AMENDED LABORATORY REPORT</b>				
<b>Samples:</b> One sample identified as "Sosafe – External Surface Revival" were received from Sosafe on the 9 <sup>th</sup> June, 2009 for TGA disinfectant testing.				
<b>Method:</b> TGO No. 54 – The TGA Disinfectant Efficacy: Test option A				
<b>Inocula:</b> <u>Inoculum type:</u> <i>Pseudomonas aeruginosa</i> NCTC 6749 <i>Proteus vulgaris</i> NCTC 4635 <i>Escherichia coli</i> NCTC 8196 <i>Staphylococcus aureus</i> NCTC 4163				
<b>Results:</b> Analysis was performed on samples as received, in 5 replicates. Both samples were tested at neat as per customer's instructions.				
	<b>Sosafe – External Surface Revival</b>	<b>Culture Count cfu/ml</b>	<b>Culture only</b>	<b>Media + Disinfectant + Culture</b>
<i>P. aeruginosa</i> -Test 8 minutes:	No Growth	4.4 x 10 <sup>8</sup>	Growth	Growth
-Test 18 minutes:	No Growth			
<i>P. vulgaris</i> -Test 8 minutes:	No Growth	5.2 x 10 <sup>8</sup>	Growth	Growth
-Test 18 minutes:	No Growth			
<i>E.coli</i> -Test 8 minutes:	No Growth	4.4 x 10 <sup>8</sup>	Growth	Growth
-Test 18 minutes:	No Growth			
<i>S.aureus</i> -Test 8 minutes:	No Growth	1.8 x 10 <sup>8</sup>	Growth	Growth
-Test 18 minutes:	No Growth			
Disinfectant activity	Acceptable	-	-	-

ALS Food/Pharmaceutical  
ABN 84 009 936 029  
Part of the ALS Laboratory Group  
4 Westall Road Springvale, Victoria 3171 Australia  
Phone +61 3 8549 9600 Fax +61 3 8549 9097 [www.alsglobal.com](http://www.alsglobal.com)

# SoSafe™ External Surface Revival

## TGA Disinfectant Testing



Reference: FM0902639A-2  
Page 2 of 2

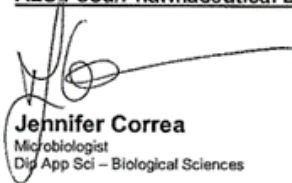
### **Comments:**

No growth was observed for media only and media plus disinfectant.

The sample identified as "Sosafe - External Surface Revival" demonstrated acceptable disinfectant efficacy based on the evaluation set out in TGO No. 54 – The TGA Disinfectant Efficacy: Test option A.

---

### **ALS Food/Pharmaceutical Division**

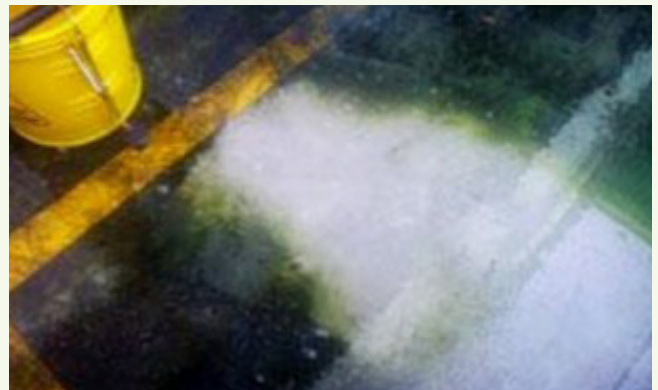


**Jennifer Correa**  
Microbiologist  
Dip App Sci – Biological Sciences



# SoSafe™ External Surface Revival

## Examples



# SoSafe™ Vanilla Fresh

## SoSafe™ Vanilla Fresh Odour Neutraliser

Vanilla Fresh is a odour neutraliser and surface sanitiser, originally developed to neutralise smoke, vomit/urine smells and to interrupt the breeding cycle of barflies. SoSafe™ Vanilla Fresh has proven useful to a much more broad scope of customers in areas where traditional deodorisers do not work!

### How Vanilla Fresh Works?

Vanilla Fresh leaves a light vanilla scent that temporarily masks the smell while the Surface Active Technology goes to work, killing smell producing bacteria. Once the vanilla scent dissipates the area has been odour neutralised of all nasty smells. SoSafe™ Vanilla Fresh has been scientifically proven to remove bacteria at the source, Vanilla Fresh will also prevent new bacteria growth, resulting in odour and bacteria free surfaces for longer!

### Ideal for

- Hotels
- Clubs
- Nursing Homes
- Hire Cars & Buses
- Councils
- Restaurants (including fridges)
- Home
- Where ever there is an odour problem

SoSafe™ Vanilla Fresh is the most effective odour remover from indoor areas such as toilet areas to remover urine smells, garbage areas carpets, tiles, rubber mats, fridge, cars and many more.



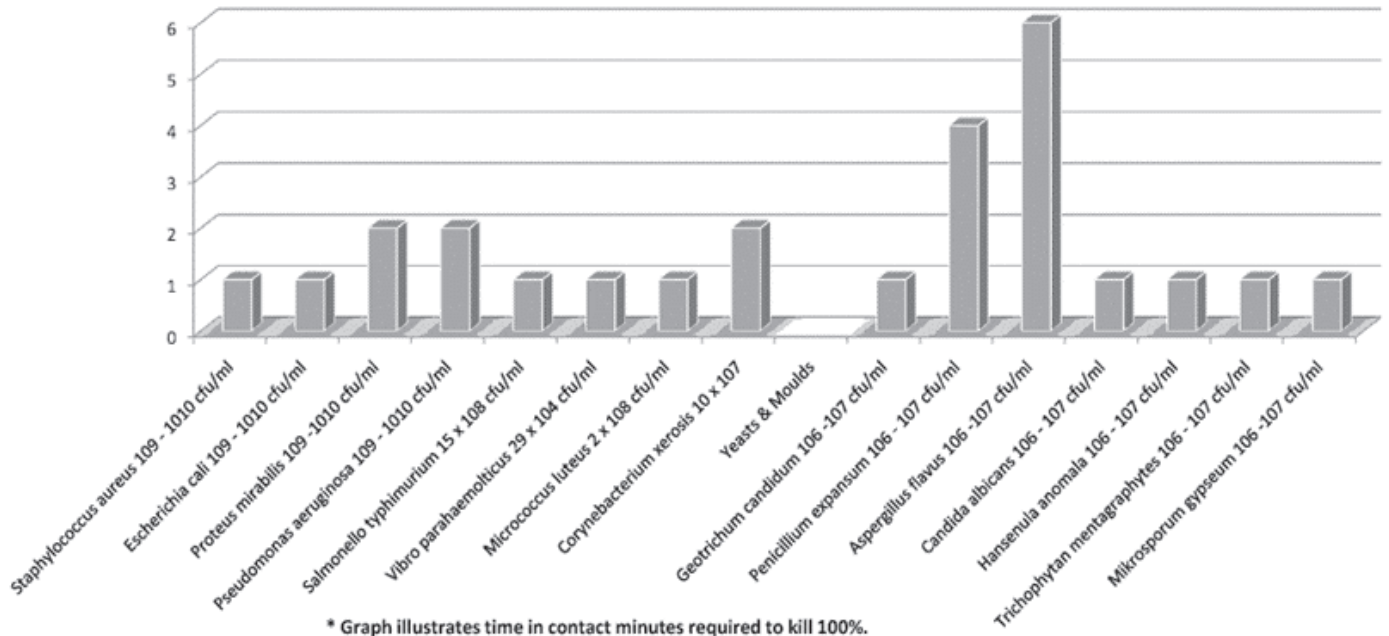
### Specifications

Application Method	Spray
Biodegradable	Yes
Form	Liquid
Pack Sizes	12 x 750ml Trigger spray pack 3 x 5 Lt Carton 25 Lt Drum

# SoSafe™ Vanilla Fresh


SoSafe™ Vanilla Fresh  
Odour Neutraliser

## Bacteria Kill Rates



# SoSafe™ Vanilla Fresh

## TGA Commercial Grade Disinfectant Testing

<b>ALS Laboratory Group</b> ANALYTICAL CHEMISTRY & TESTING SERVICES					
<b>Food/Pharmaceutical Division</b>	<b>Reference:</b> FM0903578 13 <sup>th</sup> November, 2009 (This report replaces the one dated the 30 <sup>th</sup> July, 2009) Page 1 of 2				
So Safe Specialty Product Pty Ltd PO Box 386 Brookvale, NSW 2100					
<b>Attention:</b> Russell James					
<b>Amended LABORATORY REPORT</b>					
<b>Samples:</b> One sample identified as "Sosafe – Vanilla Fresh" were received from Sosafe on the 9 <sup>th</sup> June, 2009 for TGA disinfectant testing.					
<b>Method:</b> TGO No. 54 – The TGA Disinfectant Efficacy: Test option C					
<b>Inocula:</b> <u>Inoculum type:</u> <i>Escherichia coli</i> NCTC 8196 <i>Staphylococcus aureus</i> NCTC 4163					
<b>Results:</b> Analysis was performed on samples as received, in 5 replicates. Sample was tested at neat as per customer's instructions.					
		<b>Sosafe – Vanilla Fresh</b>	<b>Culture Count cfu/ml</b>	<b>Culture only</b>	<b>Media + Disinfectant + Culture</b>
<i>E. coli</i> -Test 8 minutes:	No Growth	2.7 x 10 <sup>8</sup>	Growth	Growth	
<i>S. aureus</i> -Test 8 minutes:	No Growth	2.3 x 10 <sup>8</sup>	Growth	Growth	
Disinfectant activity	Acceptable	-	-	-	
<small>ALS Food/Pharmaceutical ABN 64 009 936 029 Part of the ALS Laboratory Group 4 Westall Road Springvale, Victoria 3171 Australia Phone +61 3 8549 9600 Fax +61 3 8549 9697 www.alslobal.com</small>					

# SoSafe™ Vanilla Fresh

## TGA Commercial Grade Disinfectant Testing



Reference: FM0903578  
13<sup>th</sup> November, 2009  
(This report replaces the one dated the 30<sup>th</sup> July, 2009)  
Page 2 of 2

### Comments:

No growth was observed for media only and media plus disinfectant.

The sample identified as "Sosafe – Vanilla Fresh" demonstrated acceptable disinfectant efficacy based on the evaluation set out in TGO No. 54 – The TGA Disinfectant Efficacy: Test option C.

### ALS Food/Pharmaceutical Division

A handwritten signature in black ink, appearing to read 'Jennifer Correa'.

**Jennifer Correa**  
Microbiologist  
Dip App Sci – Biological Sciences



# SoSafe™ Stainless Steel Polish

## SoSafe™ Stainless Steel Polish With Microbial Protection

With the increasing popularity of Stainless Steel in architecture and in the fabrication of appliances and furniture, a need has been generated for a low cost/low labour solution to maintaining its' "as new" appearance.

SoSafe™ Stainless Steel Polish incorporates Surface Active Technology (SAT), which not only provides microbial protection against bacterial and mould growth for up to 2 weeks but also resists unsightly fingerprints and smudges for extended periods, and greatly reduces future cleaning time and effort.

### Characteristics

- Non-Toxic
- Non-Flammable
- Non-Corrosive
- Odourless
- Effortless Application

### Applications

- Stainless Steel
- Chrome
- Alloys
- Polished Wood

### Product Coverage

Typically 20-40ml per square metre.

### Typical Uses

- Boat trim and metalwork
- BBQ's
- Coffee Machines
- Bench Tops (including food areas)
- White Goods
- Lifts
- Car Interiors

*Note: For rust stain removal use SoSafe™ Metal Bright.*



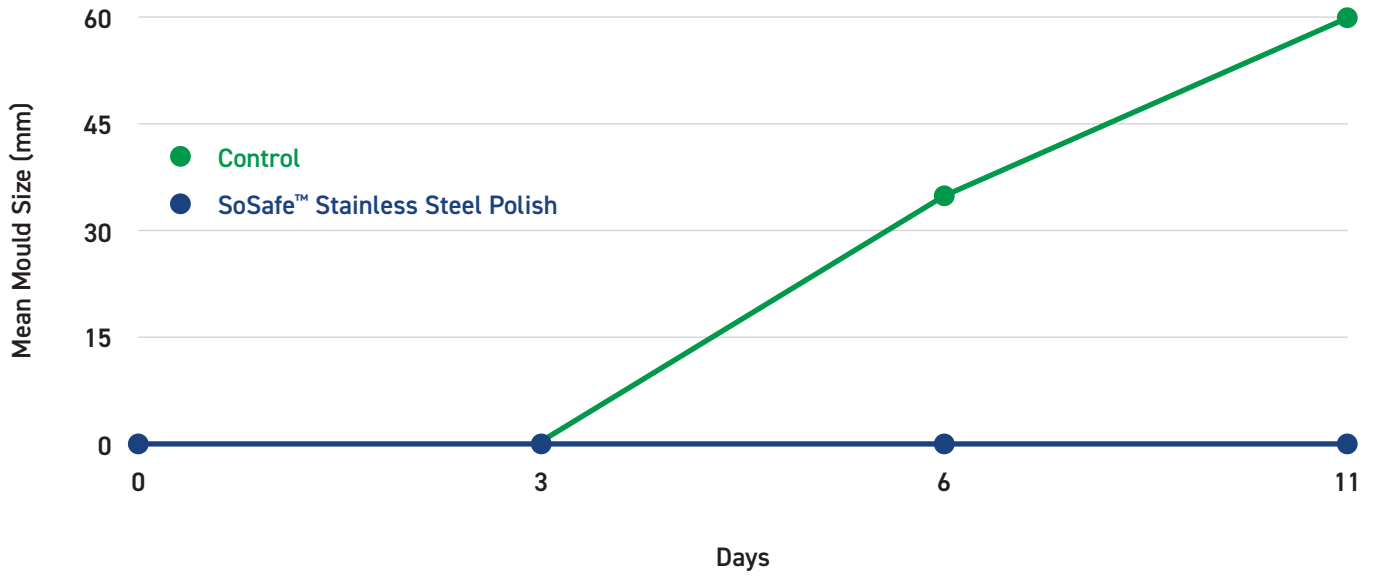
### Specifications

<b>Pack Sizes</b>	6 x 750ml Trigger Pack (Carton) 12 x 750ml Trigger Pack (Carton) 3 x 5 Lt Carton
-------------------	----------------------------------------------------------------------------------------

# SoSafe™ Stainless Steel Polish

Test Conducted by Microbiologists - Bernard, Health and Associates - Australia

SoSafe™ Stainless Steel Polish vs Mould Size



# SoSafe™ Metal Bright

## SoSafe™ Metal Bright Rust & Tarnish Remover

SoSafe™ Metal Bright is formulated to remove surface rust, “tea leaf” rust stains, and other stains from a wide range of hard surfaces.

Metal Bright also pacifies the surface, which provides both a rejuvenated appearance and greatly retarded tendency to further damage. Further protection can be achieved with a light application of SoSafe™ Stainless Steel Polish.

Metal Bright is ideal for Stainless Steel, Chrome, Enamel, Alloys, and even tiles and many other non-metallic surfaces.

### Characteristics

- Non-Toxic
- Non-Flammable
- Biodegradable
- Non-Aerosol

### Applications

- BBQ's
- Marine fittings
- Alloy wheels
- Coffee machines & other appliances
- Rust stains on bricks



### Application Procedure

1. Wearing gloves and safety goggles test surface for compatibility
2. Apply and leave for 3 minutes
3. Agitate with a scourer, or soft brush for sensitive surfaces. For thick or stubborn stains more time.
4. Finally, rinse surface.

### Specifications

<b>Pack Sizes</b>	6 x 750ml Trigger Pack (Carton) 12 x 750ml Trigger Pack (Carton) 3 x 5 Lt Carton
-------------------	----------------------------------------------------------------------------------------

# SoSafe™ Metal Bright

## Examples

### Scenario

Tea leaf rust staining removed from stainless steel.

### Product

SoSafe™ Metal Bright

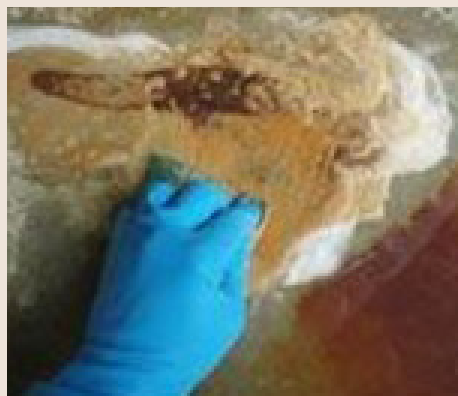
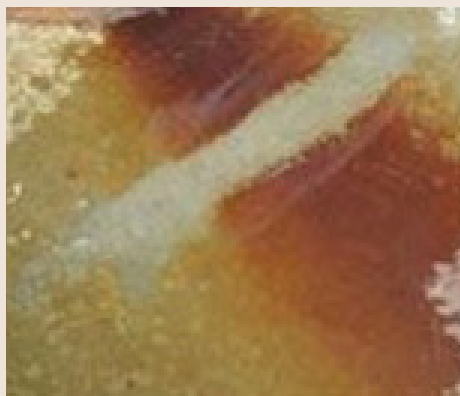


### Scenario

Rust staining removed from concrete.

### Product

SoSafe™ Metal Bright



# SoSafe™ Paint Saint

## SoSafe™ Paint Saint Paint Preparation Cleaning Solution

SoSafe™ Paint Saint is a concentrated economical surface cleaning solution specially formulated to remove surface contaminants such as dirt, grease, grime, mould and other stains from surfaces prior to painting. Paint Saint is the perfect tool for paint preparation where strong bonding between the surface and paint is desired.

### Characteristics

- Concentrated (Professional Strength)  
Super strength to breakdown the toughest surface contaminants!
- Non Crystallising formulation (free rinsing)
- Unlike sugar soap, Paint Saint won't crystallize if not rinsed off the surface.
- Removes mould & mould spores  
Mould, if not removed can penetrate through the paint.
- No Odour – Pleasant to use!
- Non Hazardous & Non Toxic – Safe for you!
- Biodegradable – Safe for the environment!
- Economical!

SoSafe™ Paint Saint is safe for use on all washable surfaces including tiles, floors, ceilings and walls. Paint Saint can also be used as a non-hazardous general purpose cleaner to remove dirt, grease, grime, mould, blood, shoe scuff-marks and other stains from most surfaces.



### Specifications

Pack Sizes 12 x 750ml Trigger Pack (Carton)

# International Shipping Information

# International Shipping Information

## Customs Tariff Codes

Product Name	HS Code	Shipping Classification
Graffiti Removers	3814.00	None
Shadow Chaser	3814.00	UN1719 / CLASS 8 / PKG GRP II
Rapid Off	3814.00	UN2319 / CLASS 3 / PKG GRP III
Safety Shield	3824.90	None
ESR	3402.20	None
Spray Away	3402.20	None
Paint Saint	3402.20	None
Vanilla Fresh	3824.90	None
Stainless Polish	3405.90	None
Metal Bright	3402.20	UN1760 / CLASS 8 / PKG GRP III

## Pallet Configuration

SoSafe™ pallets can be configured in a number of ways to achieve optimal shipping rates. When shipping LCL there is a maximum of four layers of cartons or two layers of 25Lt drums per pallet. When shipping FCL maximum of three layers of cartons or two layers of 25Lt drums per pallet.

Packaging Dimensions	
3 x 5 Lt Carton	39 x 20 x 31cm
12 x 750mL Carton	37.5 x 27.5 x 32cm
6 x 750mL Carton	27 x 20 x 31cm
12 x 1 Quart	34 x 26 x 24cm
25 Lt Drum	28 x 28 x 40cm
1000Lt IBC	100 x 120 x 118 cm

Pallet Layer
18 Cartons of 3 x 5Lt (72 = full LCL pallet)
12 Cartons of 12 x 750mL (48 = full LCL pallet)
24 Cartons of 6 x 750mL
16 Drums of 25Lt

## Pricing

Ex Works – Brookvale, NSW Australia. | Anaheim, CA. USA.

# Retail Barcode System

# Retail Barcode System

SoSafe™ offers a number of retail or industrial ready products. Below is a list of GTIN-13 codes. These are compatible with most countries barcoding systems. Cartons with GTIN-14 marking available on request.

GTIN13 with check digit	Product Description
9345285000002	SoSafe™ Blue Gel Graffiti Remover 750mL
9345285000019	SoSafe™ Yellow Graffiti Remover 750mL
9345285000026	SoSafe™ Green Graffiti Remover 750mL
9345285000033	SoSafe™ Professional Graffiti Remover 750mL
9345285000040	SoSafe™ Blue Gel Graffiti Remover 1 Litre
9345285000057	SoSafe™ Blue Liquid Graffiti Remover 1Litre
9345285000064	SoSafe™ Green Graffiti Remover 1 Litre
9345285000071	SoSafe™ External Surface Revival 5 Litre
9345285000088	SoSafe™ External Surface Revival 25 Litre
9345285000095	Spray Away (Indoor Mould Remover) RTU 750mL
9345285000101	SoSafe™ Safety Shield 5 Litre
9345285000118	SoSafe™ Stainless Steel Polish 750mL
9345285000125	SoSafe™ Metal Bright 750mL
9345285000132	SoSafe™ Paint Saint 750mL
9345285000149	SoSafe™ Vanilla Fresh 750mL
9345285000156	SoSafe™ Professional Graffiti Remover 1Litre
9345285000163	SoSafe™ Yellow Graffiti Remover 1 Litre
9345285000170	SoSafe™ Black Label Graffiti Remover 750mL
9345285000187	Shadow Chaser 5L
9345285000194	SoSafe™ Black Label Graffiti Remover 1 Litre

# Section 2

## Chemical Safety

# Chemical Safety

This section introduces you to Chemical Safety.

You will learn about:

- Safety with Chemicals
- How to understand a material Safety Data Sheet
- Using Chemicals

On completion of this Chapter you should be able to:

1. Know how to find if a chemical is hazardous or not.
2. Know how to find the personal protective equipment required for a chemical.
3. Know how to find the health and hazard information for a chemical.
4. Understand a Material Safety Data Sheet.
5. Understand the general rules for using cleaning Chemicals.

## Introduction

Chemicals are used every day in every industry. If used correctly they make one's job easier, reducing the time taken to perform a task, but used incorrectly can be hazardous to your health and those around you.

Chemicals' properties vary greatly in their degree of hazards. So for the safety of yourself and others around you, it is vital to understand the safety aspects of all chemicals before you use them. It is equally important to understand what each chemical is designed to do, and knowing how to use the right product to maximize performance making the job more efficient and safe for both the user and the environment.

Without knowledge of the safety aspects, environmental aspects, and how the chemicals work, we cannot choose the right chemical for the job. This balance is critical as the most efficient chemical is the one that takes into consideration all these aspects, not just how strong and how fast it works. An example of these considerations is using SoSafe™ Professional edition to remove graffiti from plasglass (Perspex/Clear Acrylic) will remove the graffiti but it will also damage the substrate, not achieving the desired results that SoSafe™ Yellow's gentle approach will achieve albeit a little slower.

**REMEMBER:** The right chemical for the task at hand.

This module is designed to ensure you know the safety aspect of the chemicals you are using, as this is the most important starting point.

## Chemical Safety

Obligations:

- Material Safety Data sheets (MSDS's) must be read and understood before you use any chemicals. If you don't understand any part of a Material safety Data Sheet, ask your supervisor to explain that part until you understand it.
- All Safety equipment specified in the MSDS's must be used every time you use that chemical. Even if it is just to do a small job when you are in a hurry, as this is when a lot of accidents occur.
- All chemicals will be stored in accordance with the storage of chemical's section of MSDS. Any chemicals stored in areas or in a manner that is contrary to the MSDS should be reported to your supervisor.
- All chemical spills will be cleaned up immediately in the manner described in the MSDS. All major spills will be reported immediately to your supervisor.
- All containers holding chemicals will be the correct type (ie. Dangerous goods containers for chemicals that require them) and labeled correctly. Old food containers must not be used for chemicals. Containers of unlabelled chemicals must not be used and their presence reported to your supervisor.
- Any accidents must be reported to your supervisor.
- If poisoning occurs follow the procedure detailed in the MSDS, report it to your supervisor immediately and seek medical attention.

# Chemical Safety

## Using Material Safety Data Sheets

When a MSDS is received with chemicals, it seems a lot of information. Here are a few guidelines to help understand the purpose and the various sections of the standard MSDS.

### Purpose

The MSDS is the main means of explaining the potential hazards for workplace chemicals. The fact that a MSDS has been received does not necessarily mean a product is hazardous. Manufacturer's provide MSDS's for both hazardous and non hazardous products:

1. When the contract to supply chemicals is drawn up
2. When the MSDS is updated since the last purchase
3. When specifically requested by customers

### Document Control

Because the MSDS is a regularly updated document, it is therefore a 'controlled document'. Please ensure that a newly received MSDS reaches the individuals in your organisation who are responsible for chemical safety management and that all workers that come in contact with the chemical either directly or indirectly are made aware of the new content.

### General Layout

All MSDS's follow the same layout as stipulated by WorkSafe Australia:

- a) Statement of Hazardous Nature and Company Details.  
This statement informs the user whether the chemical has been classified as hazardous to health in accordance with the Approved Criteria for Classifying Hazardous substances. The purpose of this statement is to identify those hazardous substances which must be considered in workplace assessments, as required under Occupational Health and Safety Regulations. Company Details are also listed in this first section.
- b) Identification (product name, physical properties, uses and composition)

#### Product Name

The trade name and other names and codes of the product.

#### UN Number

The United Nations number as taken from the Australian

#### Dangerous Goods Code

It gives in general the chemical family of the product.

#### DG Class

The dangerous goods class serves two function: firstly, as a means of identification of hazard (ie. Class 3 – Flammable, Class 8 – Corrosive) and secondly, as an indication of the response required in the event of an emergency.

#### Packaging Group

Indicates a degree of severity of the hazard within the class (ie, PGIII is less hazard than PGII)

#### Hazchem Code

This code reflects the initial emergency response recommended in a dangerous situation such as leakage, spillage or fire. It offers guidance only on emergency responses. It indicates the equipment suitable for fire fighting as well as precautions to be taken in the event of fire or spillage.

#### Poisons Schedule

Poisons are classified according to schedules as follows:

##### Schedule 5

The public that require caution in handling, storage and use.

##### Schedule 6

Poisons that must be available to the public but are of a more hazardous nature than those classified in schedule 5.

#### Physical Properties such as:

##### Appearance

ie. Colour, odour and form, for instance: 'yellow viscous liquid with citrus odour'.

##### Boiling Point

Temperature at which the product starts to boil

##### Melting Point

Temperature at which the product starts to melt or freeze.

##### Vapour Pressure

Indicates how much of the product is present in its vapour form.

##### Specific Gravity

Indicates how heavy the product is relative to water (ie. Liquid caustic soda has a SG of 1.5, which means one litre weighs 1.5kg)

# Chemical Safety

## Flash Point

Is the lowest temperature in degrees Celsius at which a liquid will produce enough vapour to ignite. If the flash point is room temperature or lower, the substance is flammable at room temperature.

## pH

Degree of alkalinity or acidity: pH7 means neutral, pH lower than 7 means acidic, and pH higher than 7 means alkaline.

## Ingredients

Ingredients are listed with their approx quantities.

### c) Health hazard information

In this section a summary of health effects following short term (acute) and long term (chronic) exposure is given. Usually no adverse health effects are expected if the product is handled in accordance with the MSDS and label. If the product is mishandled the listed health effects may arise.

### d) Precautions for use

The precautions for use are appropriate for the intended application and common uses of the product and provide detail for developing safe work practices. Aspects of Engineering Controls, Personal Protection and Flammability are often addressed. Often, a range of measures are listed with the proviso that they depend on the quantities used and accordingly the likelihood of splashing, spilling etc.

### e) Safe handling information

This section includes all data required for the safe storage and transport requirements of the product. Aspects of storage and transport, spills and disposal as well as fire/explosion are dealt with. An MSDS concludes with the contact point of the supplier.

## Using Chemicals

General rules for chemicals are:

1. Use the correct chemical for the job. If you do not know, ask!
2. Never mix chemicals under any circumstances (This is dangerous, and in many cases reduce the effectiveness of the products).
3. Always use gloves.
4. Always use safety equipment like 'Wet Floor' signage etc, even when you are in a hurry.
5. All cleaning equipment needs cleaning: servicing equipment is essential for safety and hygiene.
6. Cleaning chemicals are not meant to be inhaled. Always use good ventilation and when using spray bottles turn the nozzle to a jet not a fine mist.
7. Mix chemicals to water not water to chemicals.
8. Don't drink, eat, smoke when around or using chemicals.
9. Always wash hands thoroughly before eating or drinking.

# Chemical Safety

## Chemical Induction Questionnaire

What must you do before you use a chemical?

.....

Where do you find what personal protective equipment you need to use a chemical?

.....

When should all chemical spills be cleaned up?

.....

Are all chemicals that have a MSDS hazardous?

.....

If it is very hot do you have to use your personal protective equipment?

.....

Can you mix chemicals to get a better result?

.....

Can you put chemicals in any plastic container?

.....

What does pH tell you?

.....

What are 5 things you can find on an MSDS?

.....

.....

.....

.....

.....

Name

.....

Date

.....

Trainer

.....

# Section 3

## Understanding Cleaning

# Understanding Cleaning

## Understanding Cleaning

There is a lot more to cleaning than most people realise and it is important to look at all aspects if we want to be professional in our approach. In this module we are going to look at the basic processes involved in all cleaning operations.

To clean there are five basic things we need to watch. WATCH is a formula that will ensure you get maximum efficiency out of your cleaning procedure.

It stands for:

- Water
- Action
- Time
- Chemical
- Heat

All these are in every cleaning procedure and are usually inversely proportional, this means if you improve one of these components you will usually decrease another. If you put more mechanical action into a job it usually takes less time. If we go through each of these individually, you may see why.

### Water

Is the solvent we use in most cleaning operations. To clean with water we need to dissolve the soil into the water so as we remove the water we remove the soil. The problem with this system is that soils dissolve at different rates and need different chemicals to assist them to dissolve into the water.

The other problem is with the quality of the water we use. Most people are familiar with the red streaks on baths from dripping taps and the white film on tiles in showers. These residues are iron and calcium and come from the water. Poor quality water can affect the cleaning chemicals you use and the surfaces you rinse.

Probably the next biggest problem arising from cleaning with water is getting enough water in contact with the soil. All too often people try to clean greasy floors with a well-wrung mop. There is not enough water contact with the grease to dissolve into so the grease is left on the floor and the cleaner blames the chemical.

Generally the more water you get in contact with the surface the better the result will be, providing the water is not saturated with soil. So if we look at our procedures, we may be able to improve our result by increasing the amount of water we use. In the case of the greasy floor use the mop dripping with water on the

greasy area, agitate the area with the mop, then wring out the mop and pick up the water and the grease.

### Action

The more mechanical action applied to the surface the better the job will be, although this can be a problem if too much action is used as you will destroy the surface. We see this a lot with scouring powders on sinks and basins where the shiny hard surface has been removed and the porous material left is impossible to clean.

The other problem with action is it needs to be on the area where the soil is. A classic example is using scourers on tiles. The dirtiest part of the tile is always the grout and a scouring pad cannot get into the grout like a scrubbing brush. Sometimes just changing a soft scourer for a scrubbing brush will give you the extra action to improve the job or reduce time.

### Time

Time is generally the most expensive part of the cleaning operation and is therefore what we want to reduce. But time is also necessary for chemicals to work, and if we can alter our procedure to enable the chemicals to stay in contact with the surface longer, an improvement in efficiency will result. Generally the faster a chemical works, the more aggressive it is to us and to the surfaces we are cleaning. This means sometimes to use a safer chemical we have to allow longer contact time. Have a close look at your cleaning procedures and see if you can increase your chemical contact time by making minor changes.

### Chemical

Chemicals are designed to work on different soil types and at a particular dilution rate. If the wrong type of chemical is used or the wrong dilution rate is used the result will not be achieved and surface damage will result. When choosing a chemical always use the safest chemical that will do the job.

In order to choose the correct chemical, you must have a basic understanding of how chemicals work and have read the Material Safety Data Sheet for that chemical. Always use the chemicals laid down in your procedure manuals for the task you are doing. **DON'T EXPERIMENT!** As an exercise use your chemical consultant to establish all the reasons why you use the chemicals you are currently using.

### Heat

All cleaning chemicals increase their activity as the temperature increases. This becomes evident if you try to do your dishes in cold water. So to improve your cleaning of hard surfaces an increase in the temperature of your water may be all that is needed to save that

# Understanding Cleaning

little bit of time. This is particularly evident with mopping floors and the floor dries quicker, increasing safety.

Remember this is a very simple formula to remember and if you apply it to all your cleaning jobs you will be able to produce the safest cost efficient cleaning procedure for that job. It is important with today's high cost of cleaning that this be achieved.

This is only one aspect of cleaning. When looking at cleaning procedures you have to take into account occupational health and safety, environmental impact, surface wear and potential damage from chemicals and procedures, equipment, and storage and maintenance of equipment and chemicals.

If we all look at the whole picture a good, safe, efficient cleaning program is always possible.

## Understanding Cleaning Questionnaire

What does WATCH stand for?

W

.....

A

.....

T

.....

C

.....

H

.....

Can water saturated with dirt still clean?

Yes

No

.....

Does doubling the chemical give a better result?

Yes

No

.....

Can too much mechanical action destroy surfaces?

Yes

No

.....

Do chemicals need time to work?

Yes

No

.....

Will one chemical work on all soil types?

Yes

No

.....

Will hot water clean better than cold water?

Yes

No

.....

Name

.....

Date

.....

Trainer

.....